

Ex04. 2 + + 3

[] 3

[] 3

[] 4

[] 4

[(+)] 7

[()] 8

[] 8

[()] 9

[()] 9

[] 10

[:] 10

[1 :] 11

[1 :] 12

[2 :] 12

[3 :] 13

[2] 14

[3] 16

[] 18

[] 18

[] 19

[: 가] , (+) , , (+) , 19

[: 가] 20

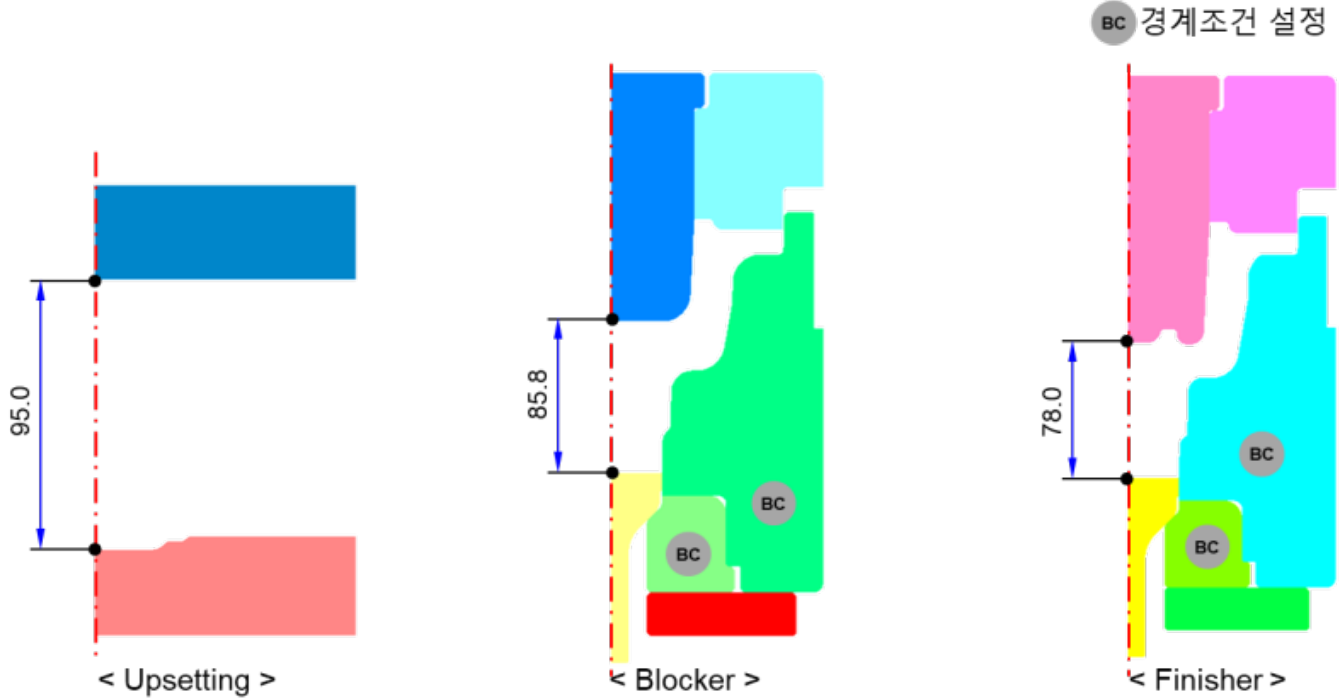
[] 20

Ex04. 2

+

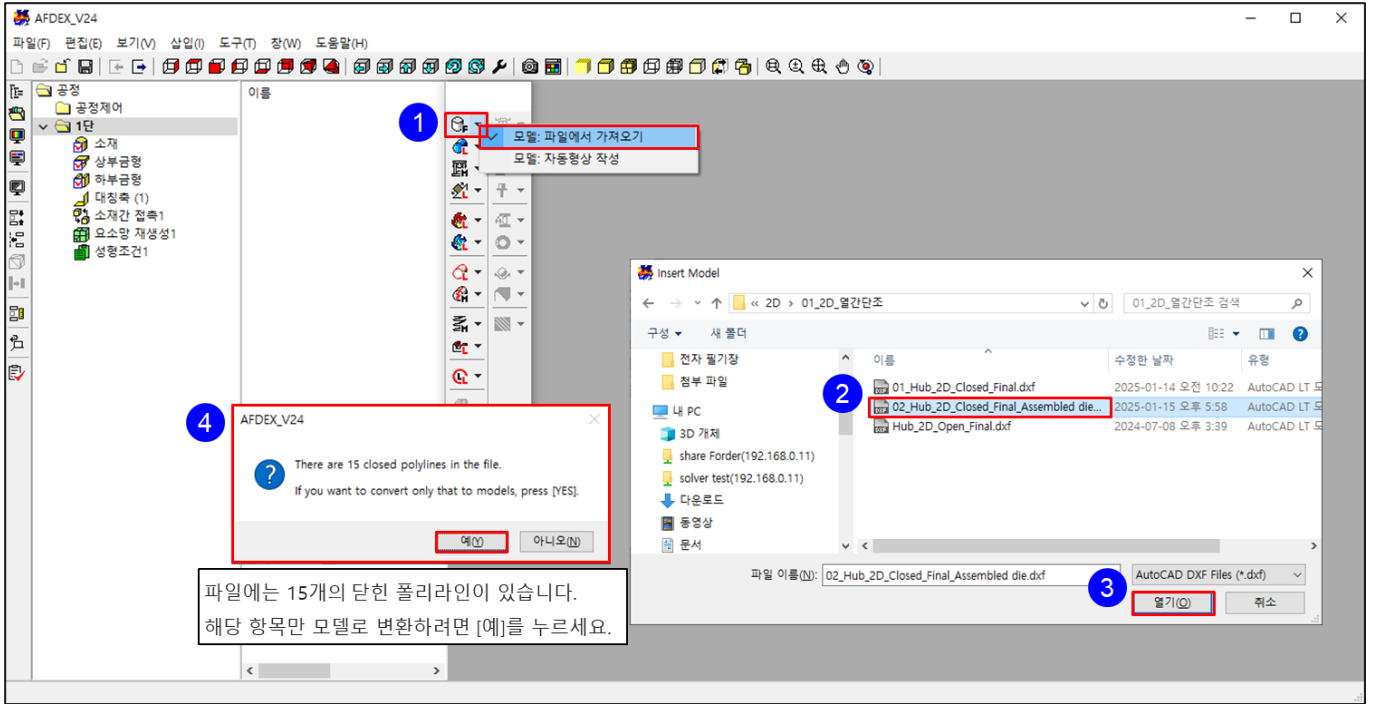
+

[]

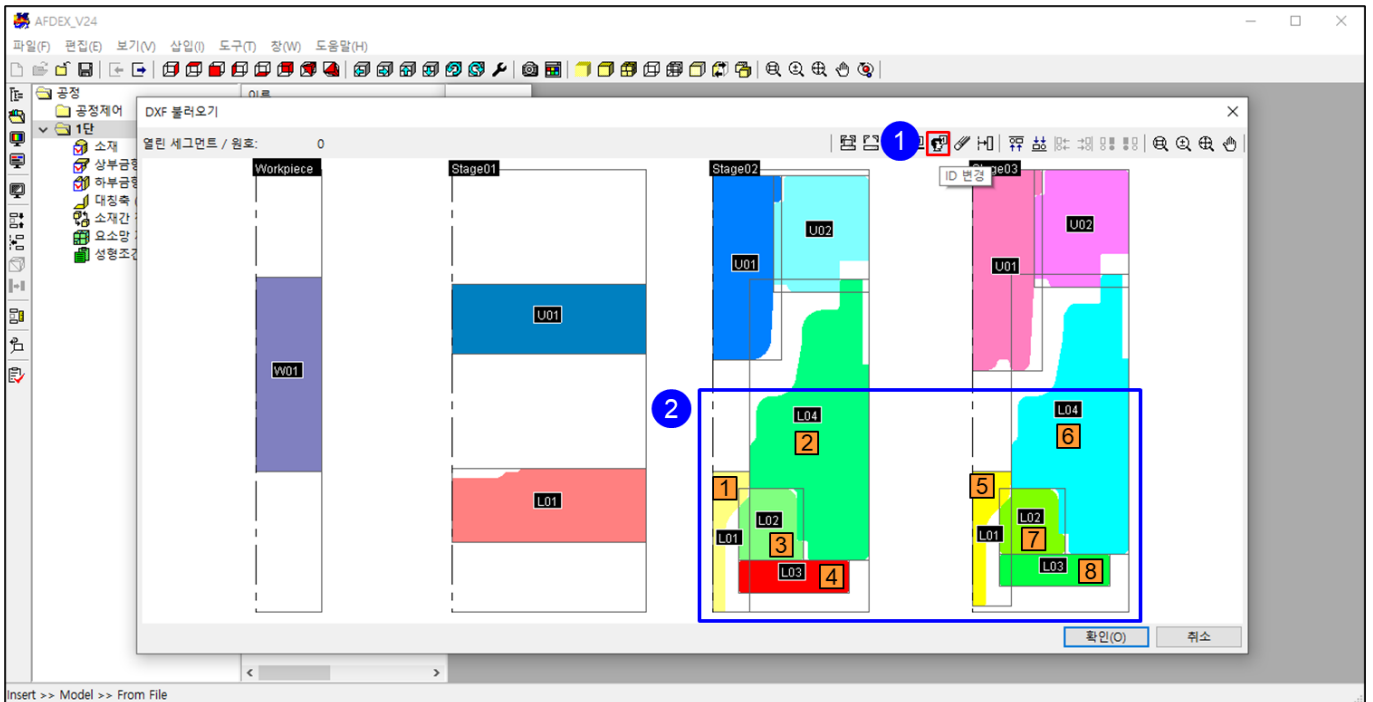


[]

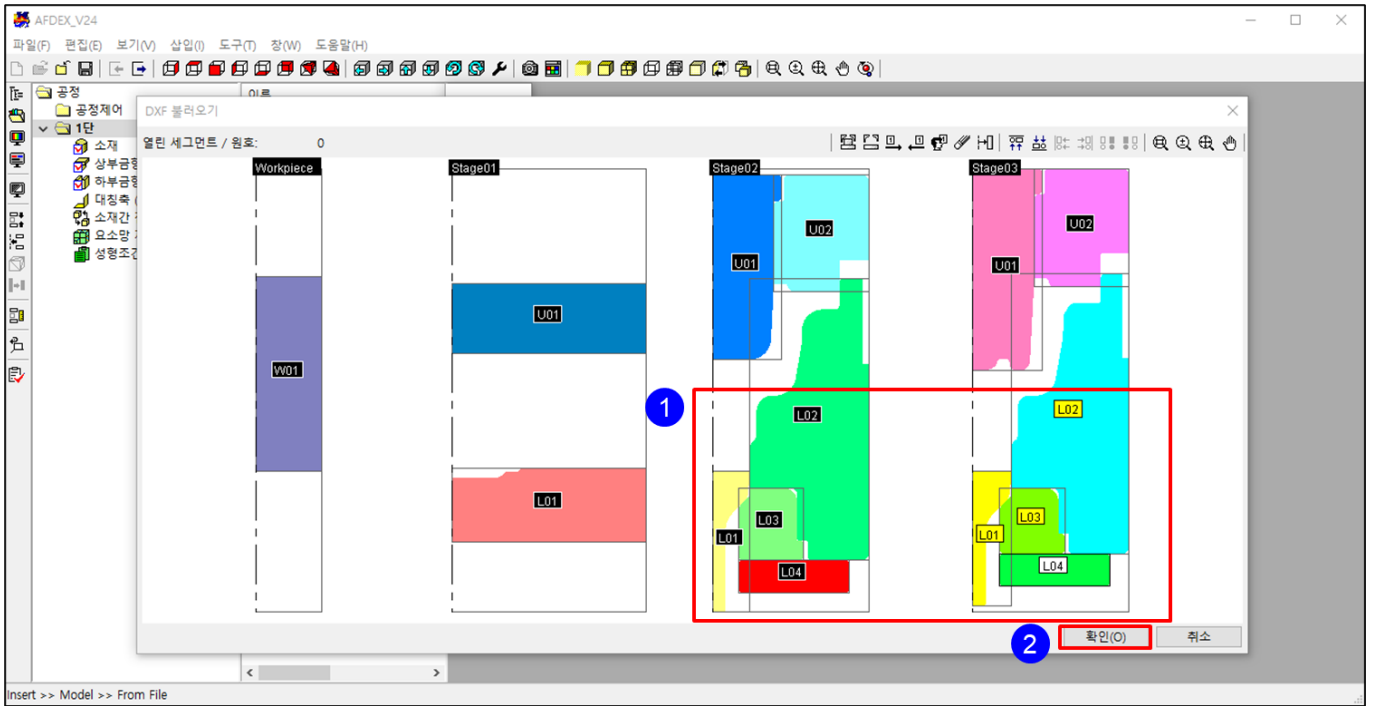
1.
 -
 -
 - (+)
 - :
2.
 - : SCM440(T=800-1300°C)E →
 - : 1200°C →
 - : dxf
3.
 - : dxf ()
 - : SKD61 →
 - : , $\mu=0.3, m=0.8$ ()
 -
 - : JFP-3000 →
 - : 0.0 mm/s()
4.
 -
 - Sample_HeatWPCS_All_Analysis →



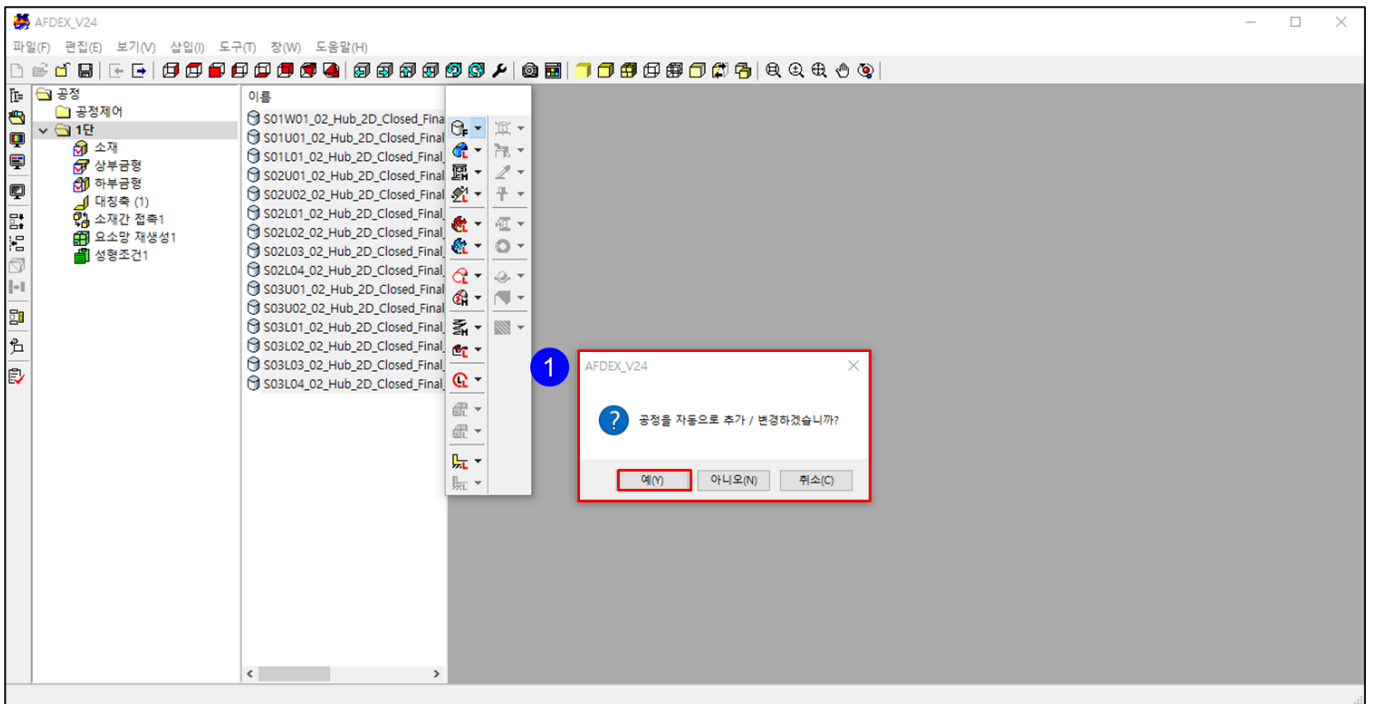
1. “ : 가 ” .
2. , “***.dxf” .
3. “ ” .
4. , “ ” .



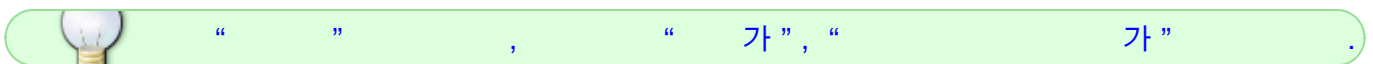
1. “ ”(ID) .(.)
2. “Stage 2” “Stage 3” [1] ~ [8] .

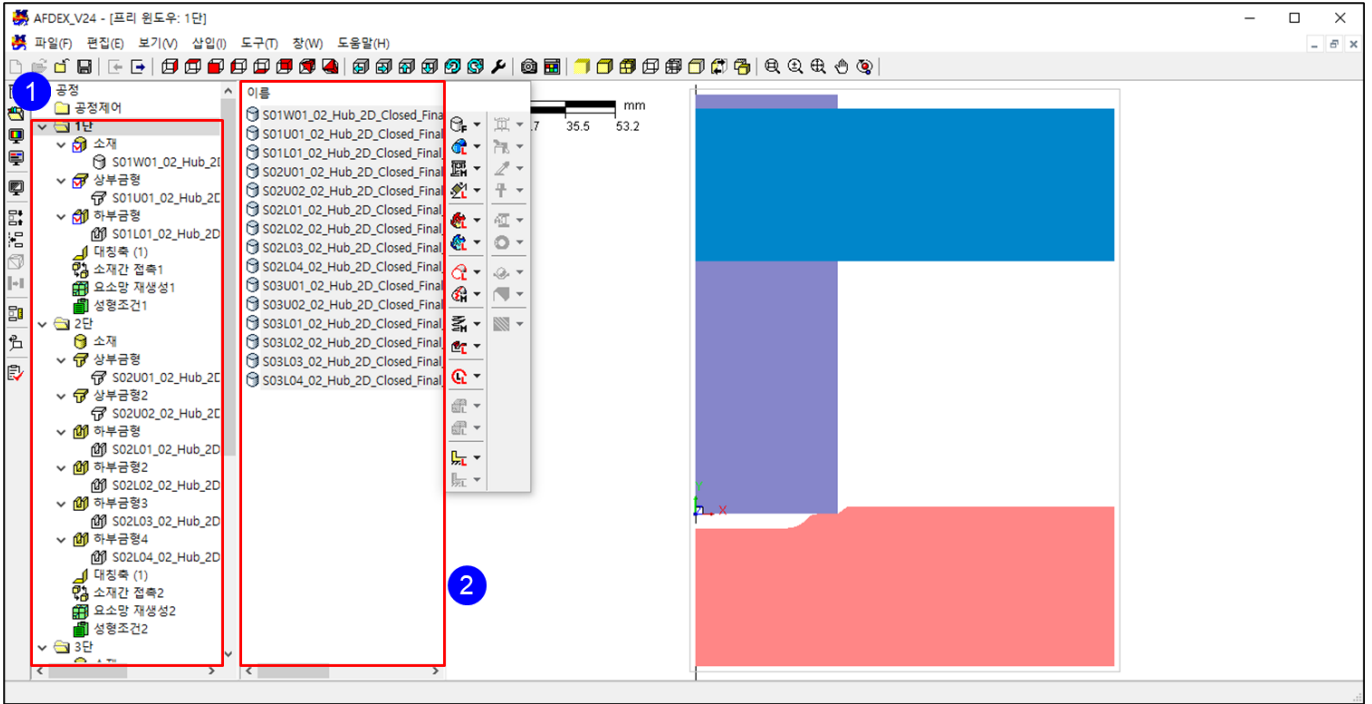


- 1. 가
- 2. “ ”



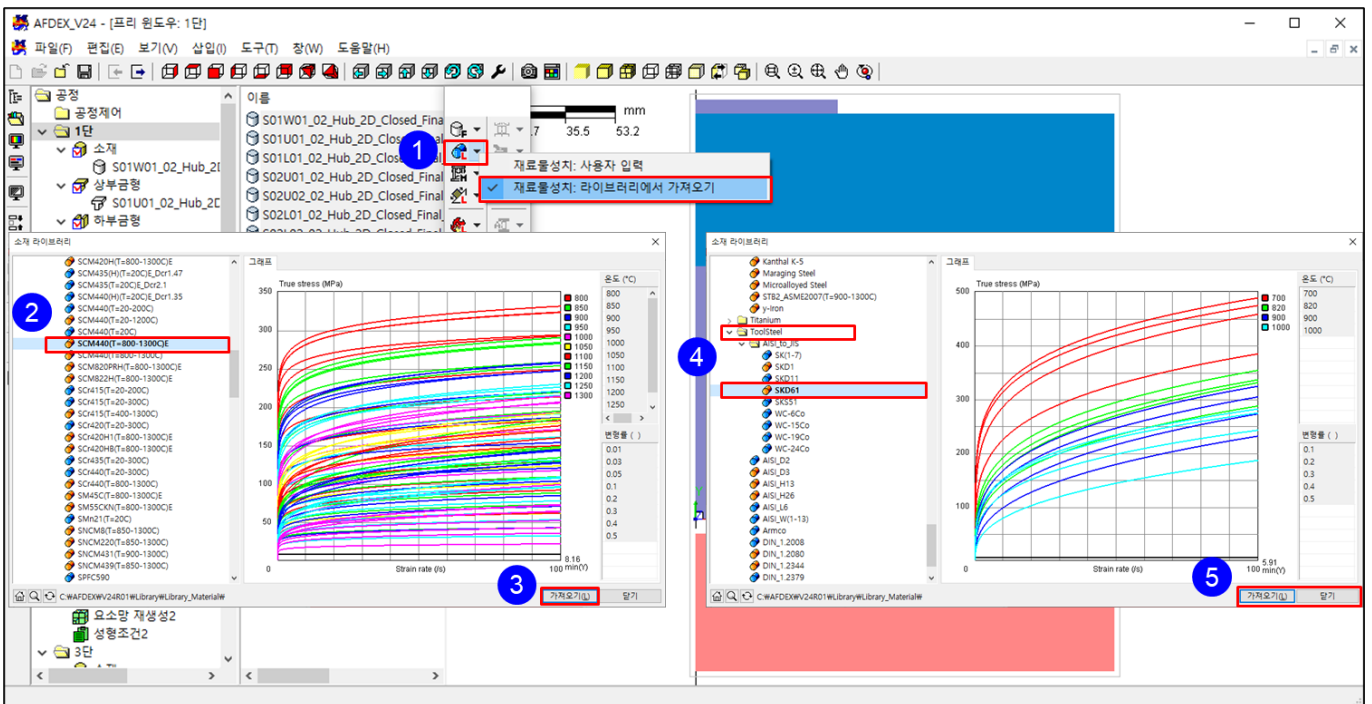
- 1. “ 가 / ? ” , “ ”





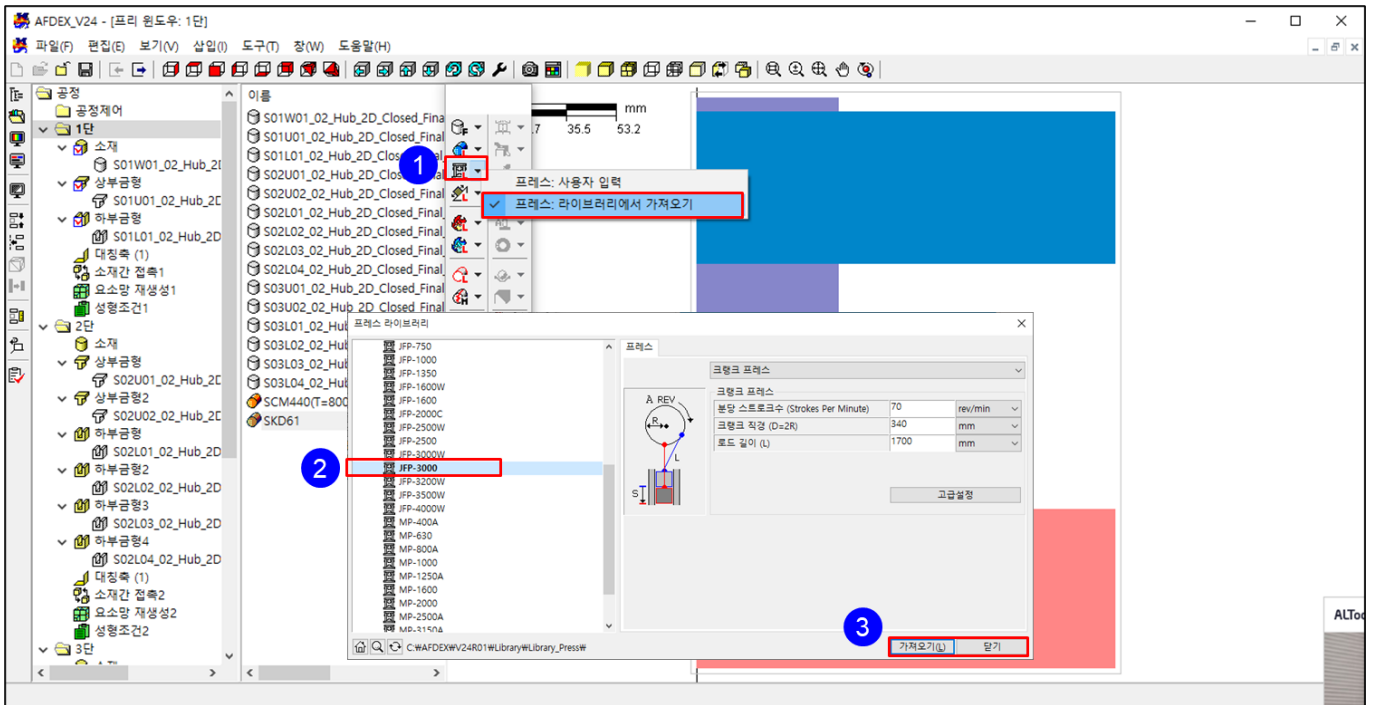
1. “ ”
2. “ ”

[(+)]



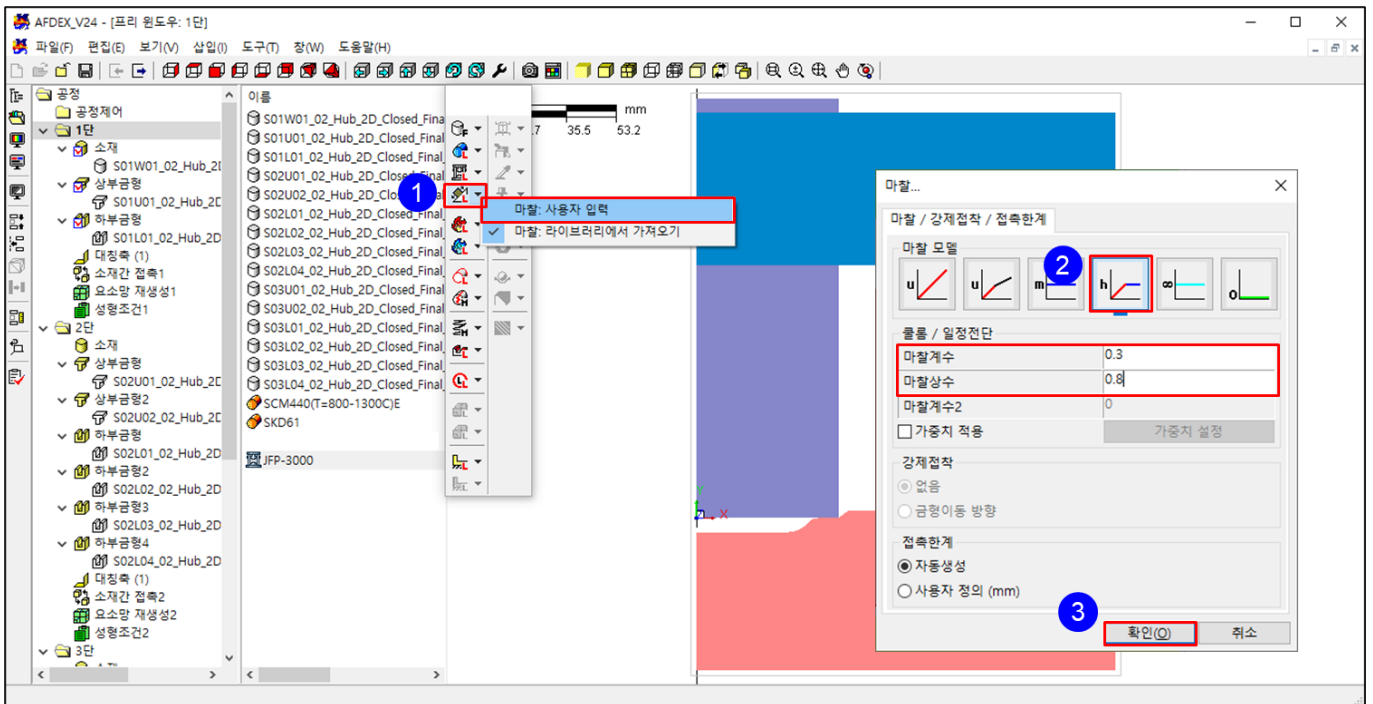
1. “ ” : 가 ” . ()
2. “ ” , “Steel → AISI to JIS → SCM440(T=800-1300°C)E”
3. “ 가 ”
4. “ToolSteel → AISI to JIS → SKD61”
5. “ 가 ” “ ”

[()]



1. “ : ” 가 ” .
2. “ ” , “JFP-3000” .
3. “ 가 ” “ ” .

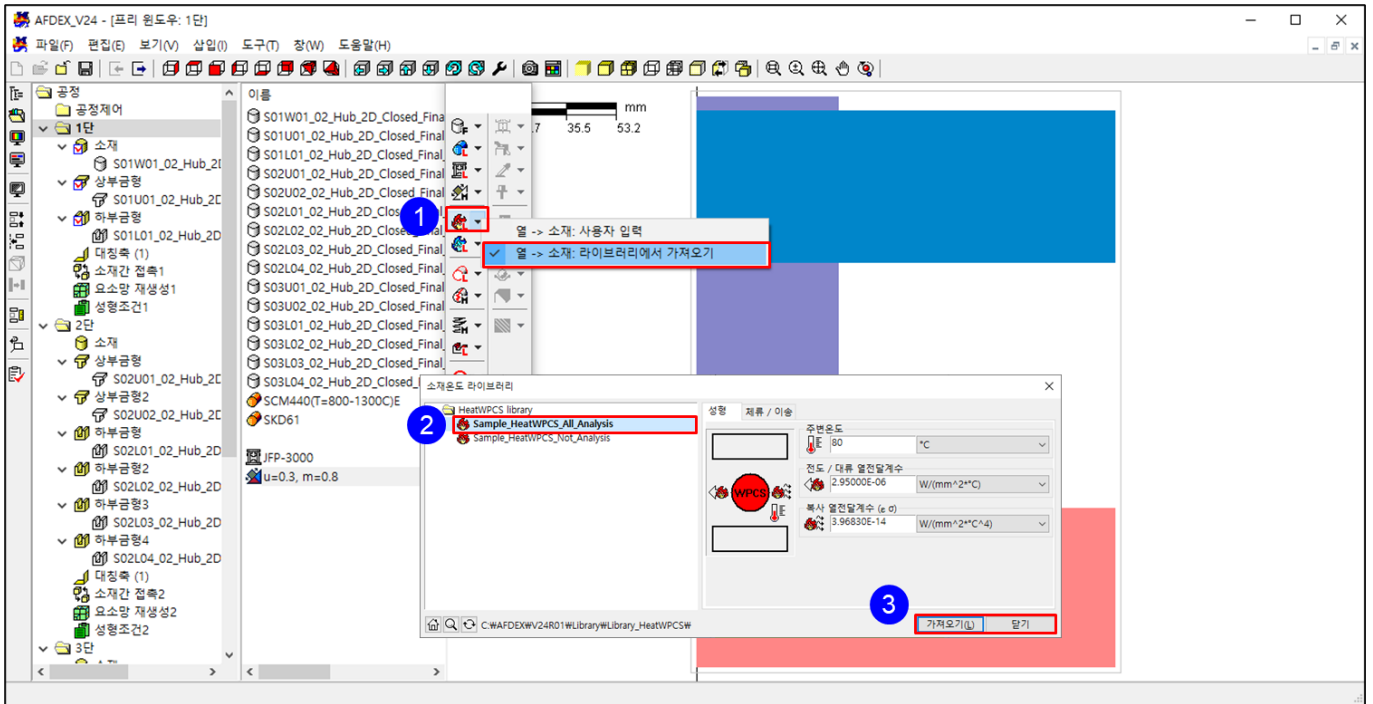
[]



1. “ : ” .
2. “ ” Hybrid ” .
- 0.3, 0.8 .

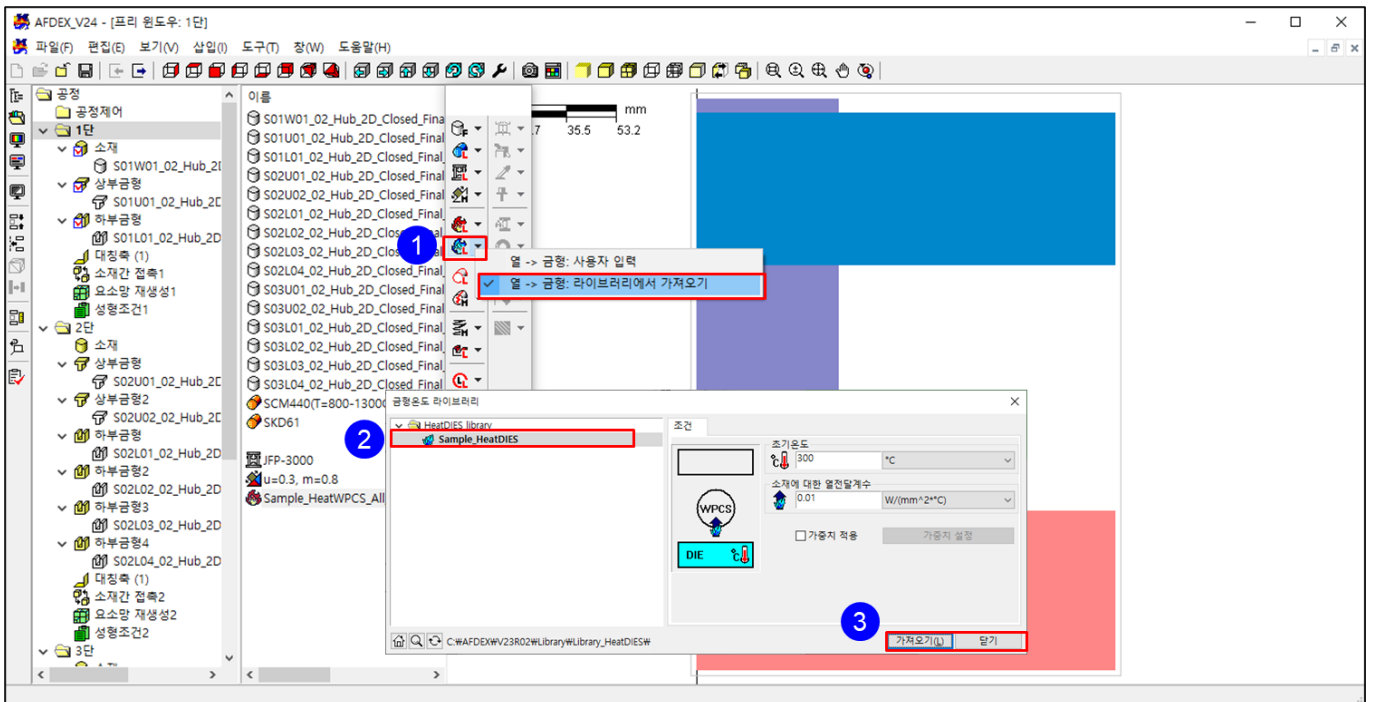
3. “ ”

[()]



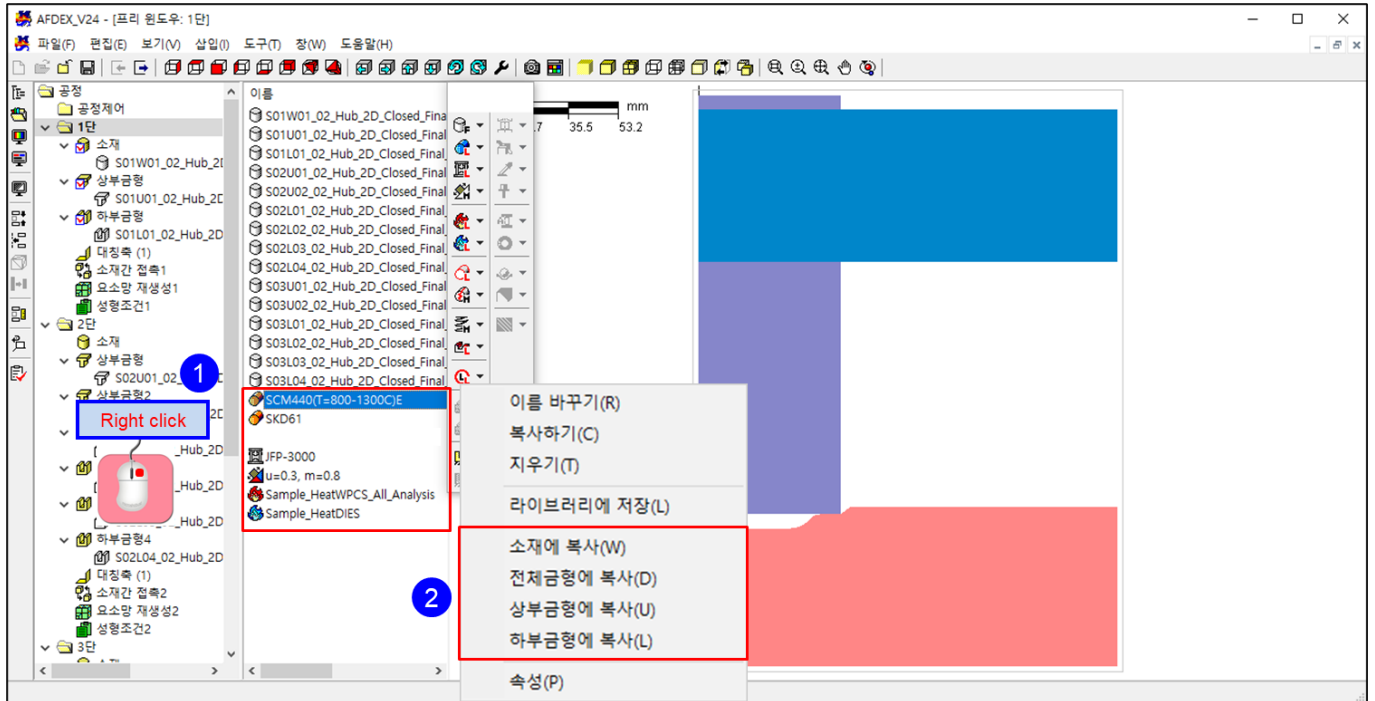
1. “ ” : “ 가 ”
2. “ ” “ ” , “Sample HeatWPCS All Analysis”
3. “ 가 ” “ ”

[()]



1. “ : ” 가 ”
2. “ ” , “Sample HeatDIES”
3. “ 가 ” “ ”

[]

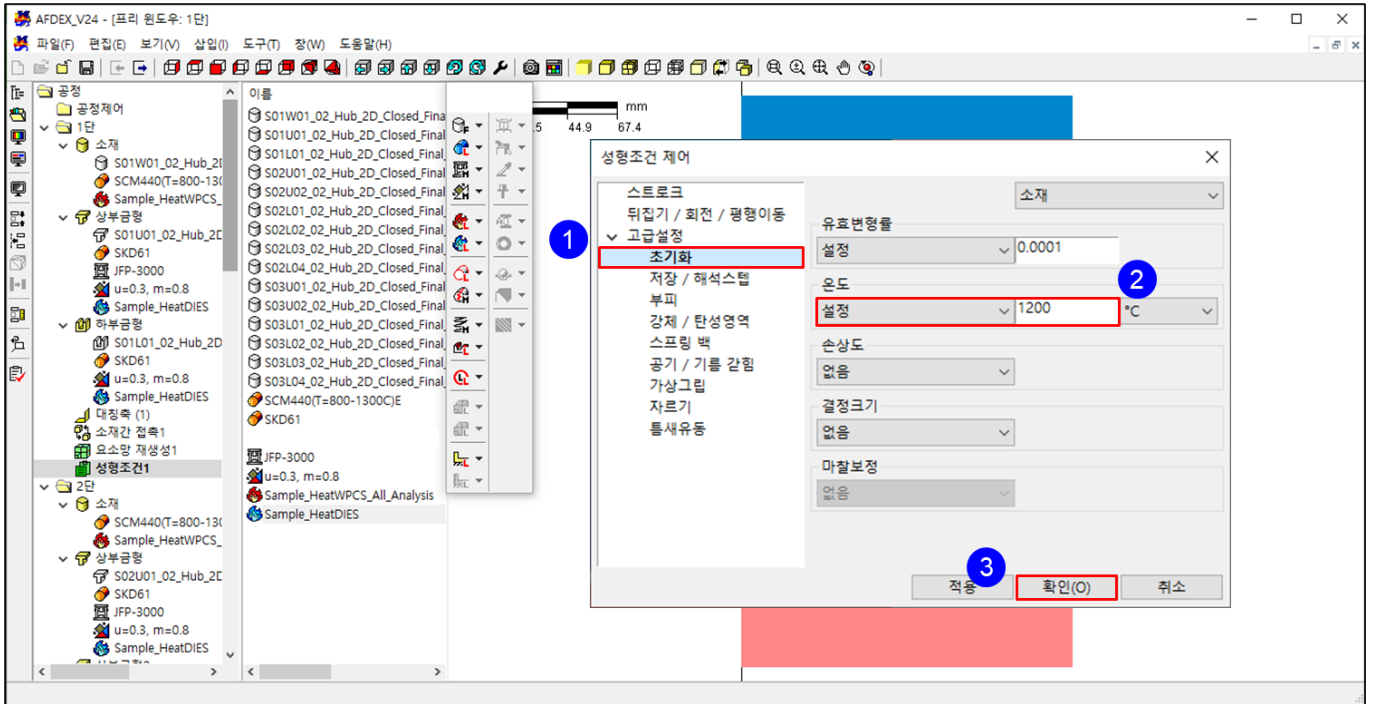


1. “ ”
2.
 - SCM440 :
 - JFP-3000 :
 - $\mu=0.3, m=0.8$:
 - SKD61 :
 - Sample HeatWPCS All Analysis :
 - Sample HeatDIES :

[:]

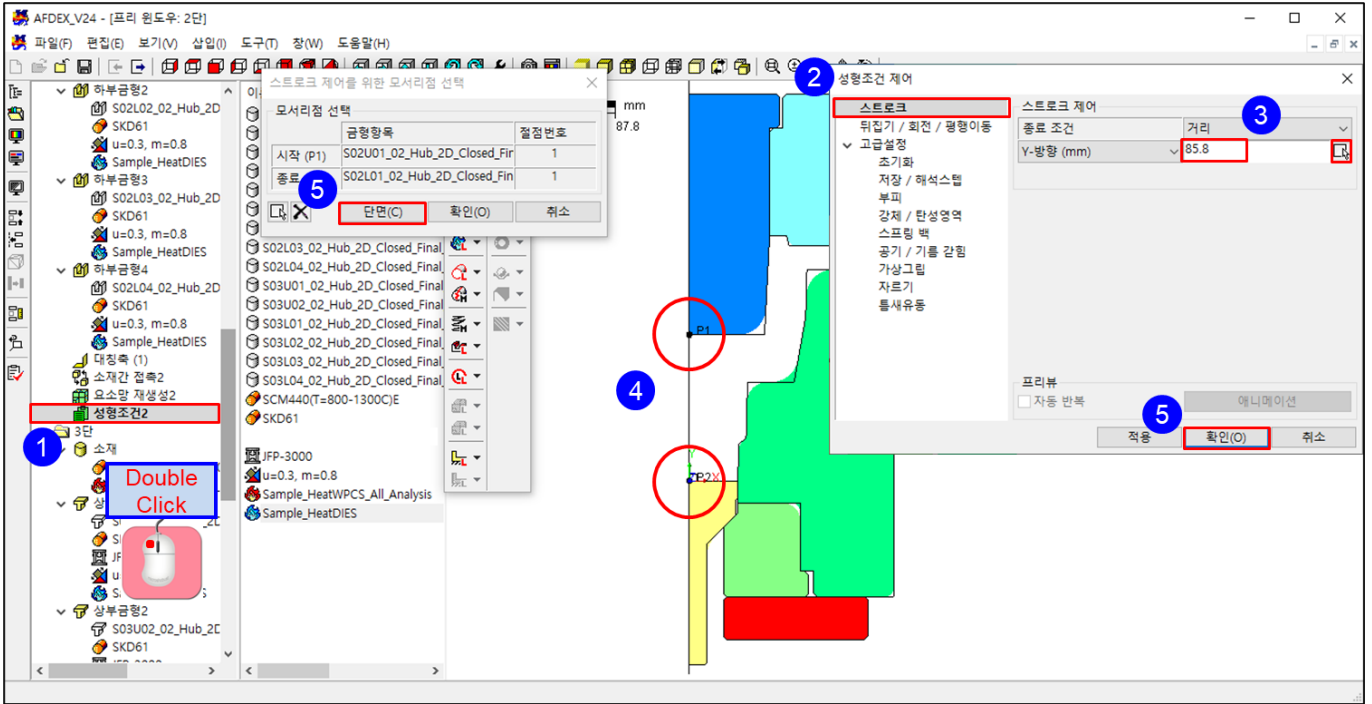
3. “ ”
4. “ ”
5. “ ”

[1 :]



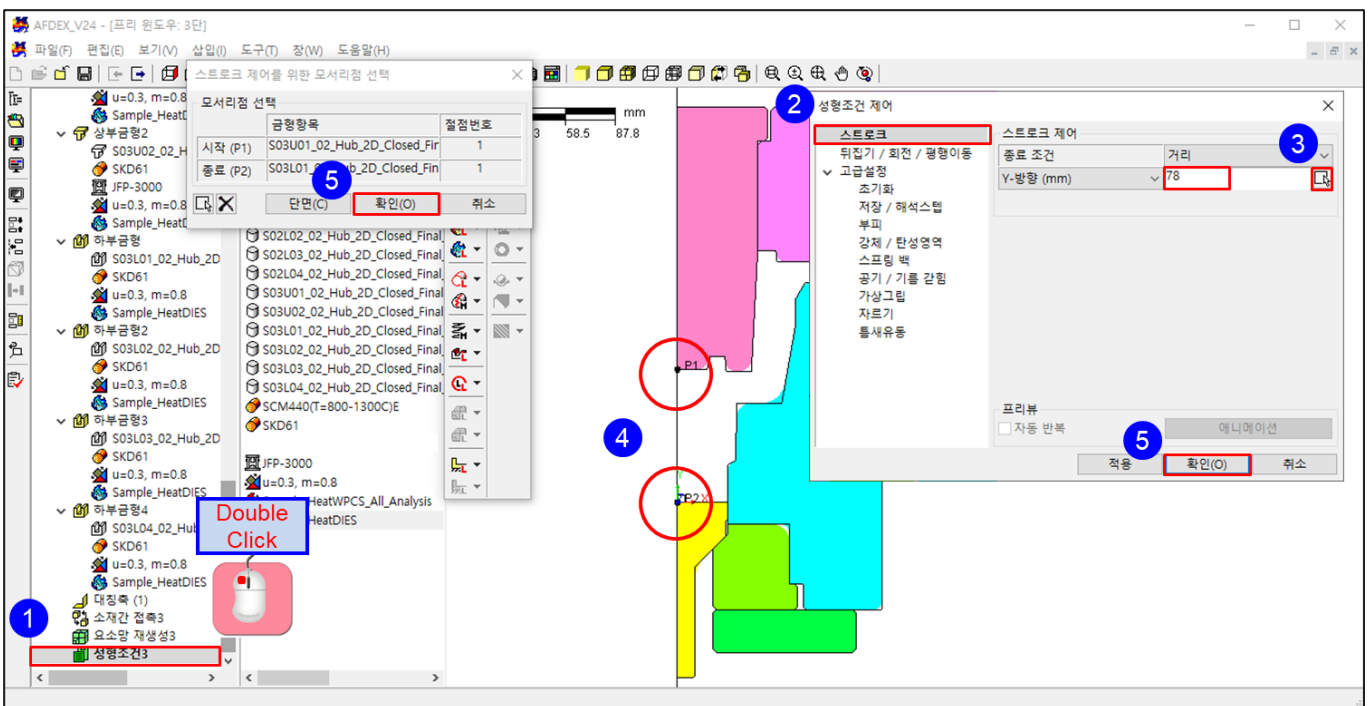
1. “ ”
2. “ ” “ 1200 ”
3. “ ”

[2 :]



1. “ 2 ”
2. “ ” , “ ” “ 85.8 ”
3. “ (”
4. “)
5. “ ” “ ” “ ” “ ” “ ”

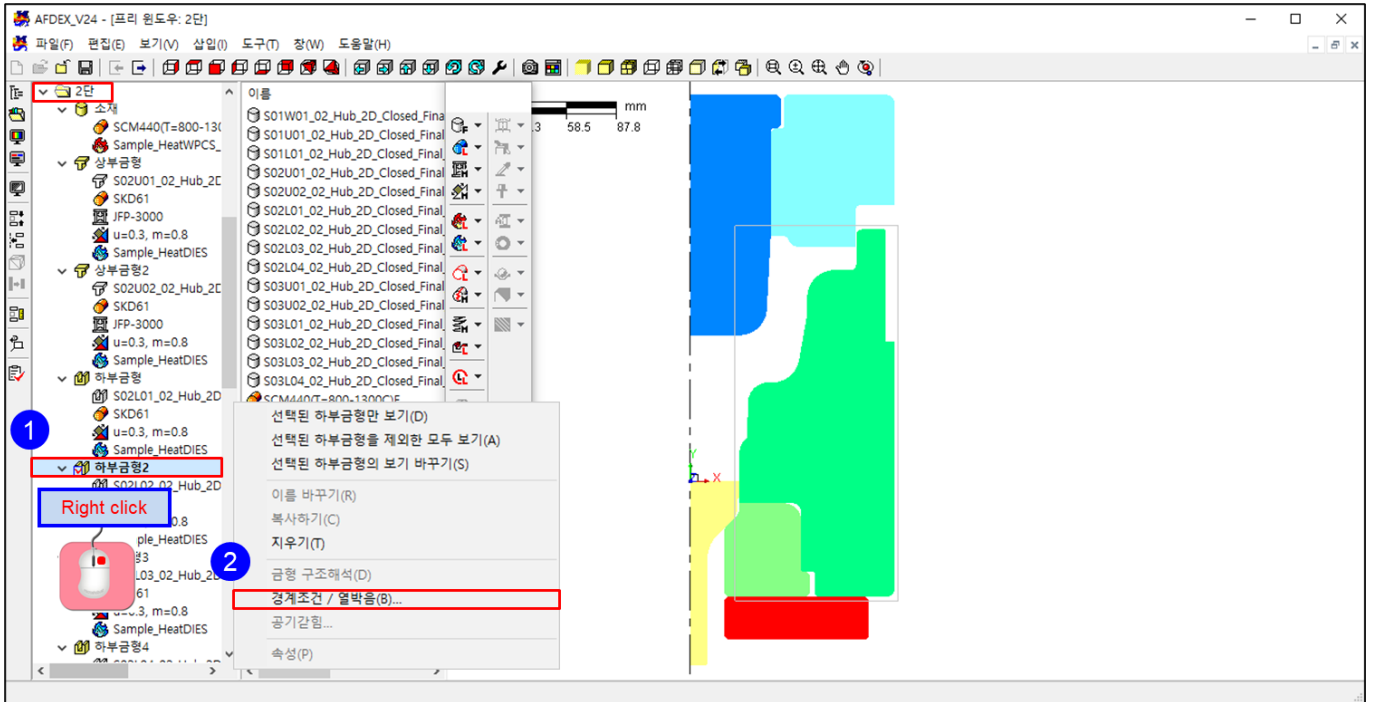
[3 :]



1. “ 3 ”
2. “ ” , “ ” “ 78 ” .(

3. " " " "
4. . ()
5. " " " " " " " "

[2]



1. 2
2. " / " 2 "

경계조건 / 열박음...

정수 파라미터

	I1	I2	I3	I4	I5	I6	I7	I8	I9	I10	I11	I12	I13	I14	I15
1	0	0	0	0	0	0	0	0	0	0	0	0	0	0	0
2	0	0	0	0	0	0	0	0	0	0	0	0	0	0	0
3	0	0	0	0	0	0	0	0	0	0	0	0	0	0	0
4	-500	0	0	0	0	0	0	0	0	0	0	0	0	0	0
5	0	0	0	0	0	0	0	0	0	0	0	0	0	0	0
6	0	0	0	0	0	0	0	0	0	0	0	0	0	0	0

실수 파라미터

	R1	R2	R3	R4	R5	R6	R7	R8	R9	R10	R11	R12	R13	R14	R15
1	0	0	0	0	0	0	0	0	0	0	0	0	0	0	0
2	0	0	0	0	0	0	0	0	0	0	0	0	0	0	0
3	0	0	0	0	0	0	0	0	0	0	0	0	0	0	0
4	0	0	0	0	0	0	0	0	0	0	0	0	0	0	0
5	0	0	0	0	0	0	0	0	0	0	0	0	0	0	0
6	0	0	0	0	0	0	0	0	0	0	0	0	0	0	0
7	0	0	0	0	0	0	0	0	0	0	0	0	0	0	0
8	0	0	0	0	0	0	0	0	0	0	0	0	0	0	0
9	0	0	0	0	0	0	0	0	0	0	0	0	0	0	0
10	0	0	0	0	0	0	0	0	0	0	0	0	0	0	0

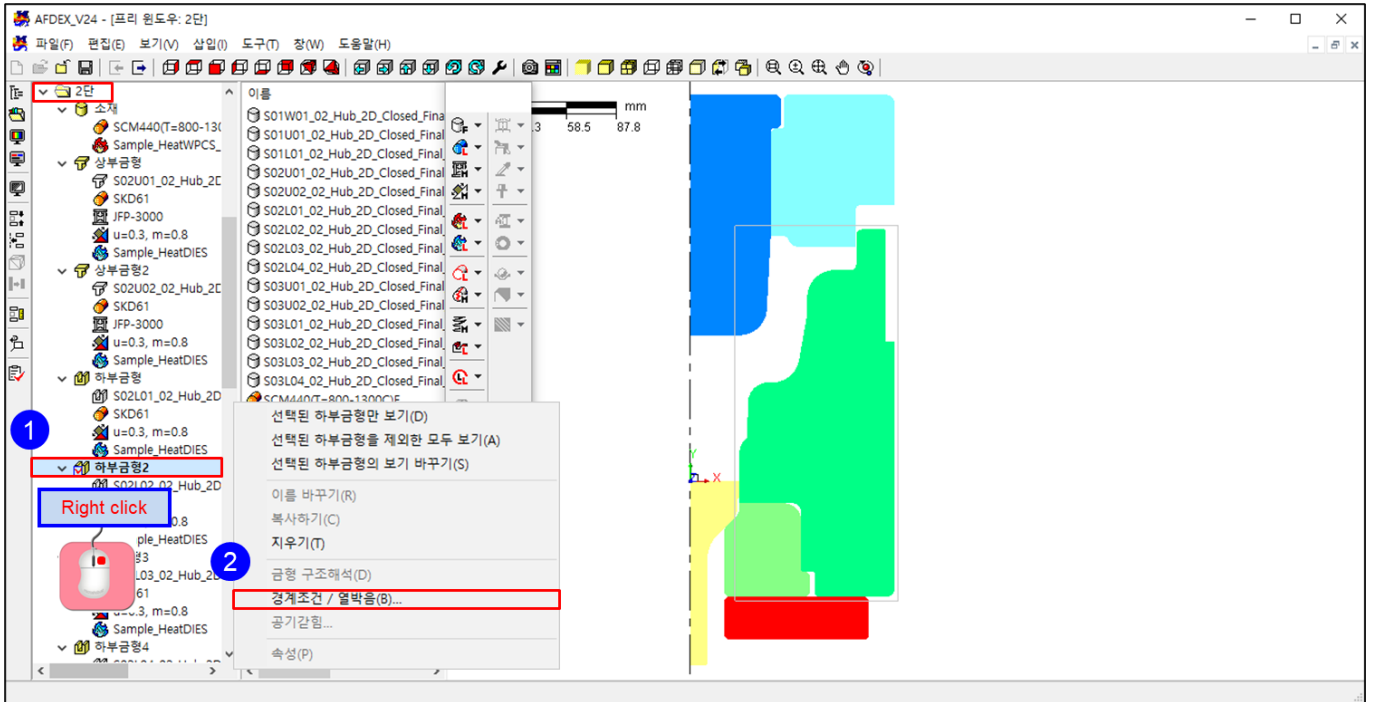
그룹 파라미터

	I1	I2	I3	I4	I5	I6
1	2	0	0	-1	0	0

확인(O) 취소(C)

1. "I1 4 " " -500 " (.
2. ") " .

※ 2D , R .
I4=-1 . (.)



1. 2 " 3 "
2. " / " .

경계조건 / 열박음...

정수 파라미터

	I1	I2	I3	I4	I5	I6	I7	I8	I9	I10	I11	I12	I13	I14	I15
1	0	0	0	0	0	0	0	0	0	0	0	0	0	0	0
2	0	0	0	0	0	0	0	0	0	0	0	0	0	0	0
3	0	0	0	0	0	0	0	0	0	0	0	0	0	0	0
4	-500	0	0	0	0	0	0	0	0	0	0	0	0	0	0
5	0	0	0	0	0	0	0	0	0	0	0	0	0	0	0
6	0	0	0	0	0	0	0	0	0	0	0	0	0	0	0

실수 파라미터

	R1	R2	R3	R4	R5	R6	R7	R8	R9	R10	R11	R12	R13	R14	R15
1	0	0	0	0	0	0	0	0	0	0	0	0	0	0	0
2	0	0	0	0	0	0	0	0	0	0	0	0	0	0	0
3	0	0	0	0	0	0	0	0	0	0	0	0	0	0	0
4	0	0	0	0	0	0	0	0	0	0	0	0	0	0	0
5	0	0	0	0	0	0	0	0	0	0	0	0	0	0	0
6	0	0	0	0	0	0	0	0	0	0	0	0	0	0	0
7	0	0	0	0	0	0	0	0	0	0	0	0	0	0	0
8	0	0	0	0	0	0	0	0	0	0	0	0	0	0	0
9	0	0	0	0	0	0	0	0	0	0	0	0	0	0	0
10	0	0	0	0	0	0	0	0	0	0	0	0	0	0	0

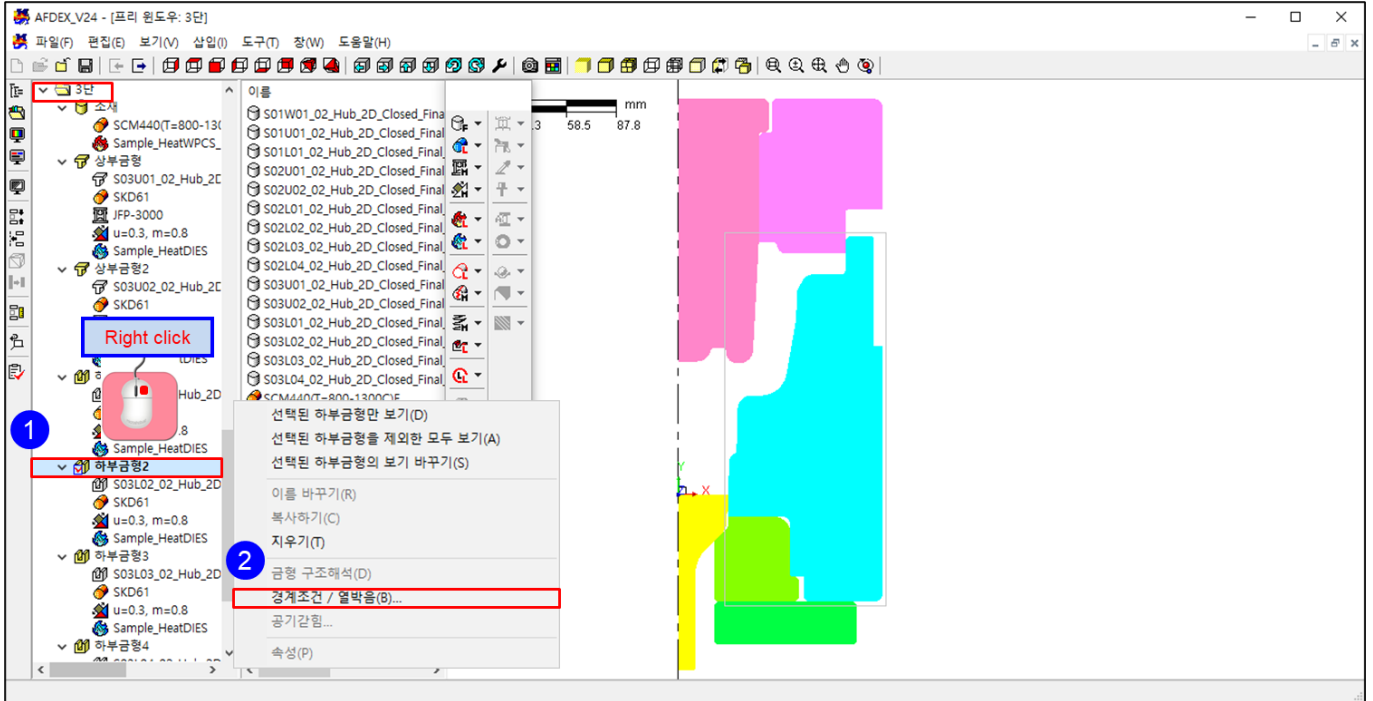
그룹 파라미터

	I1	I2	I3	I4	I5	I6
1	2	0	0	0	0	0

확인(O) 취소(C)

1. "I1 4" " -500" (.
2. " / " .

[3]



1. 3 " 2" .
2. " / " .

경계조건 / 열박음...

정수 파라미터

	I1	I2	I3	I4	I5	I6	I7	I8	I9	I10	I11	I12	I13	I14	I15
1	0	0	0	0	0	0	0	0	0	0	0	0	0	0	0
2	0	0	0	0	0	0	0	0	0	0	0	0	0	0	0
3	0	0	0	0	0	0	0	0	0	0	0	0	0	0	0
4	-500	0	0	0	0	0	0	0	0	0	0	0	0	0	0
5	0	0	0	0	0	0	0	0	0	0	0	0	0	0	0
6	0	0	0	0	0	0	0	0	0	0	0	0	0	0	0

실수 파라미터

	R1	R2	R3	R4	R5	R6	R7	R8	R9	R10	R11	R12	R13	R14	R15
1	0	0	0	0	0	0	0	0	0	0	0	0	0	0	0
2	0	0	0	0	0	0	0	0	0	0	0	0	0	0	0
3	0	0	0	0	0	0	0	0	0	0	0	0	0	0	0
4	0	0	0	0	0	0	0	0	0	0	0	0	0	0	0
5	0	0	0	0	0	0	0	0	0	0	0	0	0	0	0
6	0	0	0	0	0	0	0	0	0	0	0	0	0	0	0
7	0	0	0	0	0	0	0	0	0	0	0	0	0	0	0
8	0	0	0	0	0	0	0	0	0	0	0	0	0	0	0
9	0	0	0	0	0	0	0	0	0	0	0	0	0	0	0
10	0	0	0	0	0	0	0	0	0	0	0	0	0	0	0

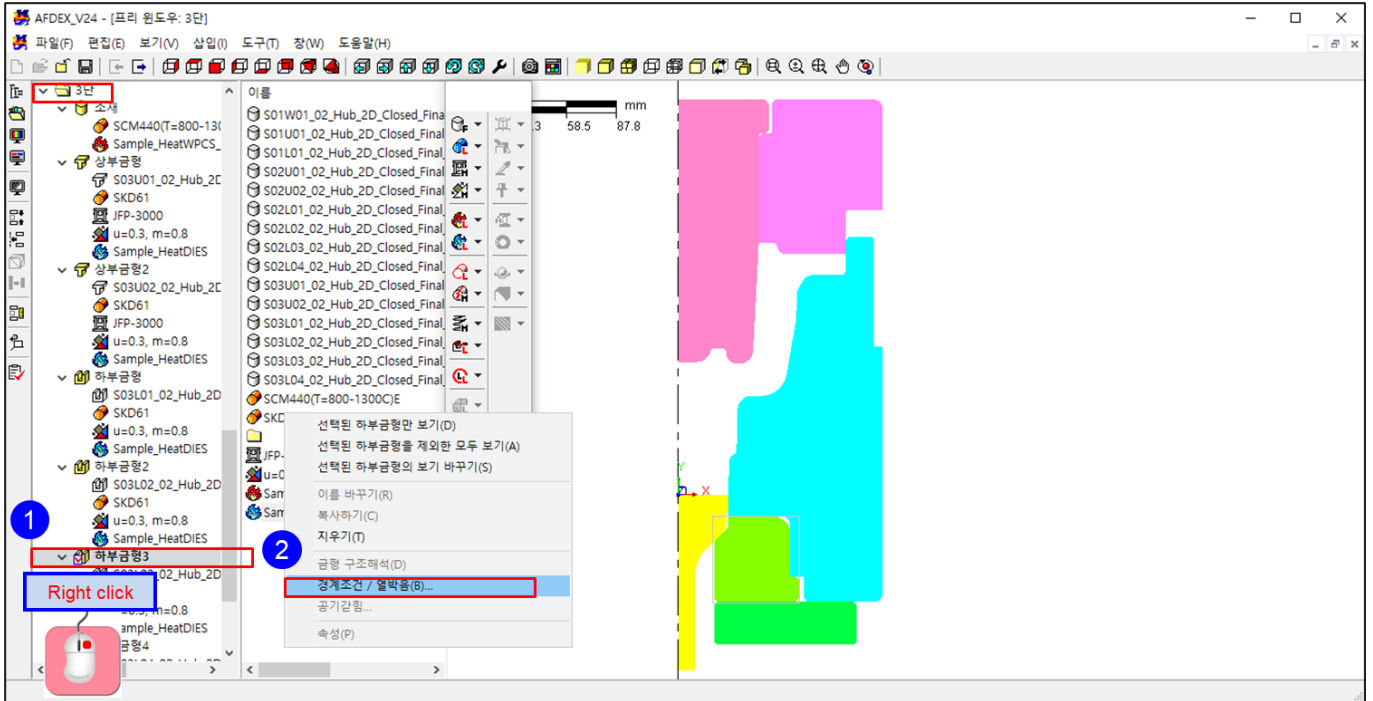
그룹 파라미터

	I1	I2	I3	I4	I5	I6
1	2	0	0	0	0	0

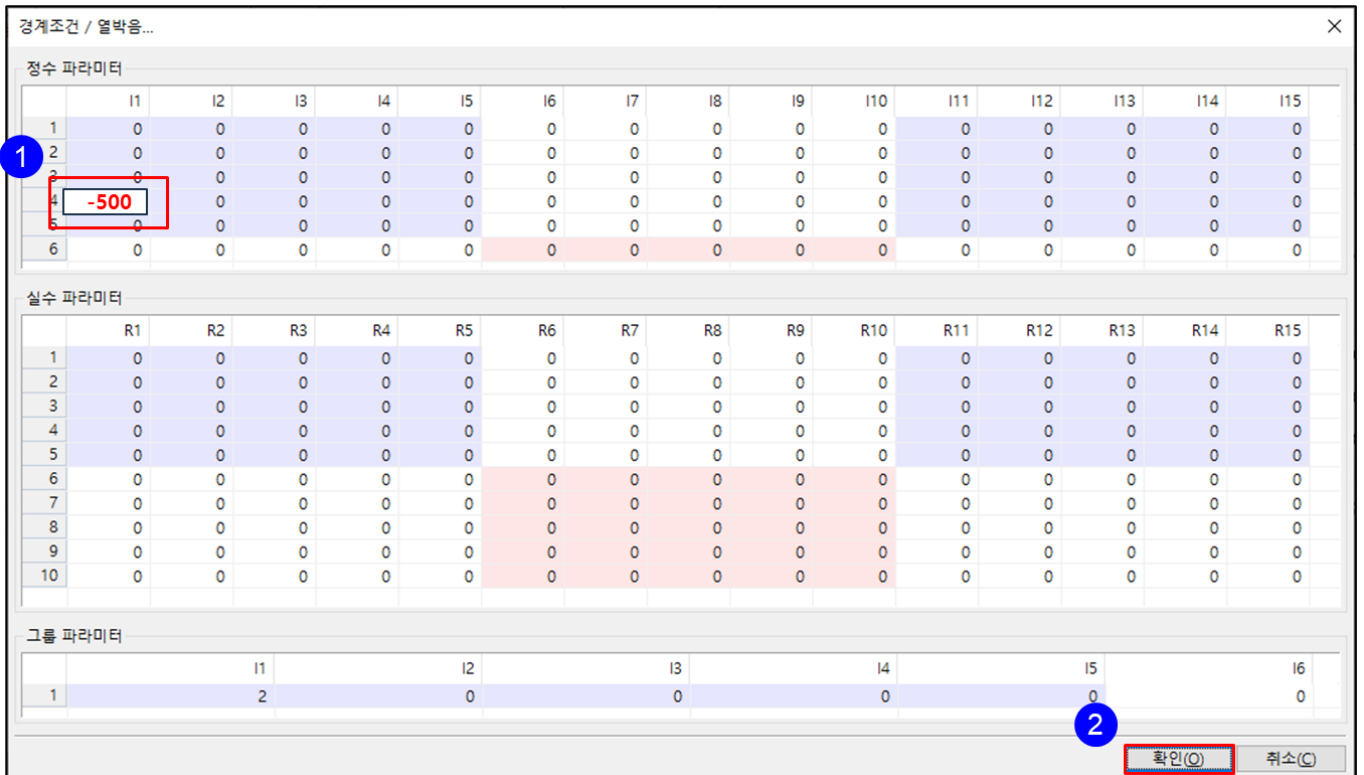
확인(O) 취소(C)

1. "I1 4" " -500" (.

2. “ ”

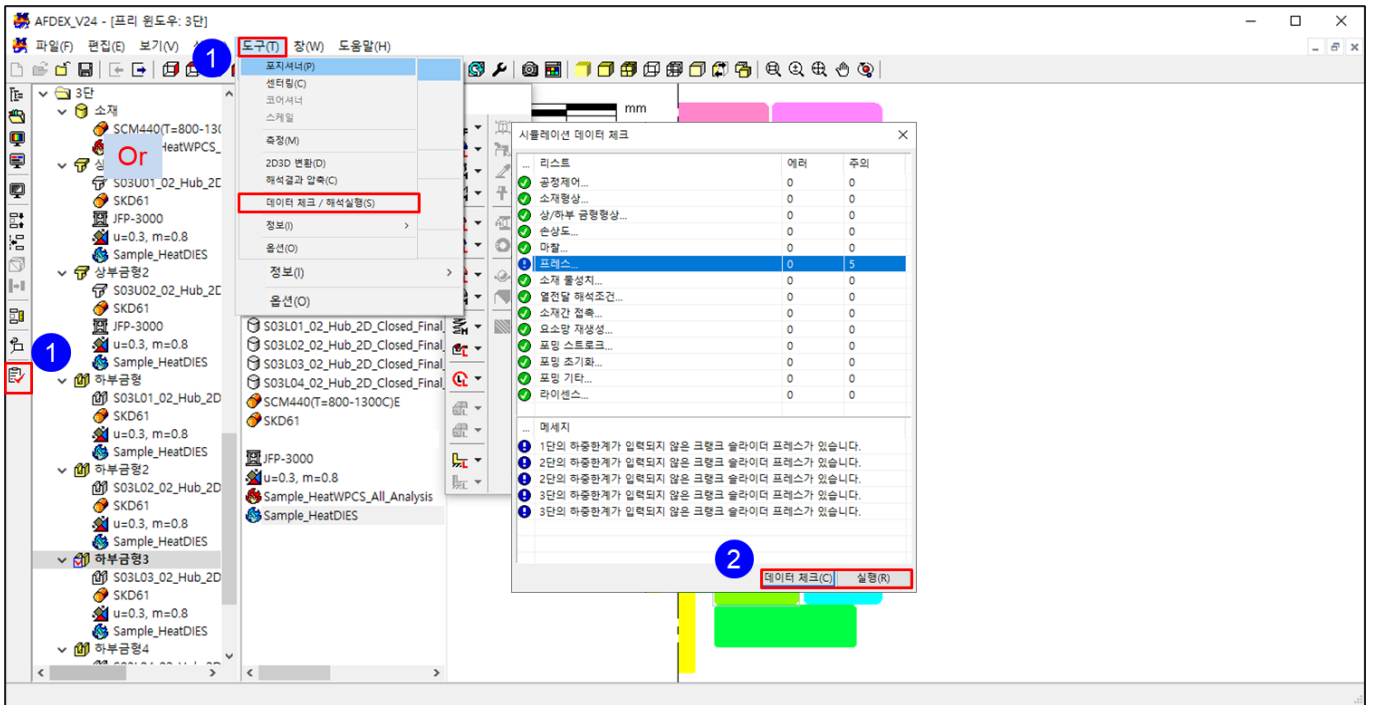


1. 3 “ 3”
2. “ / ”



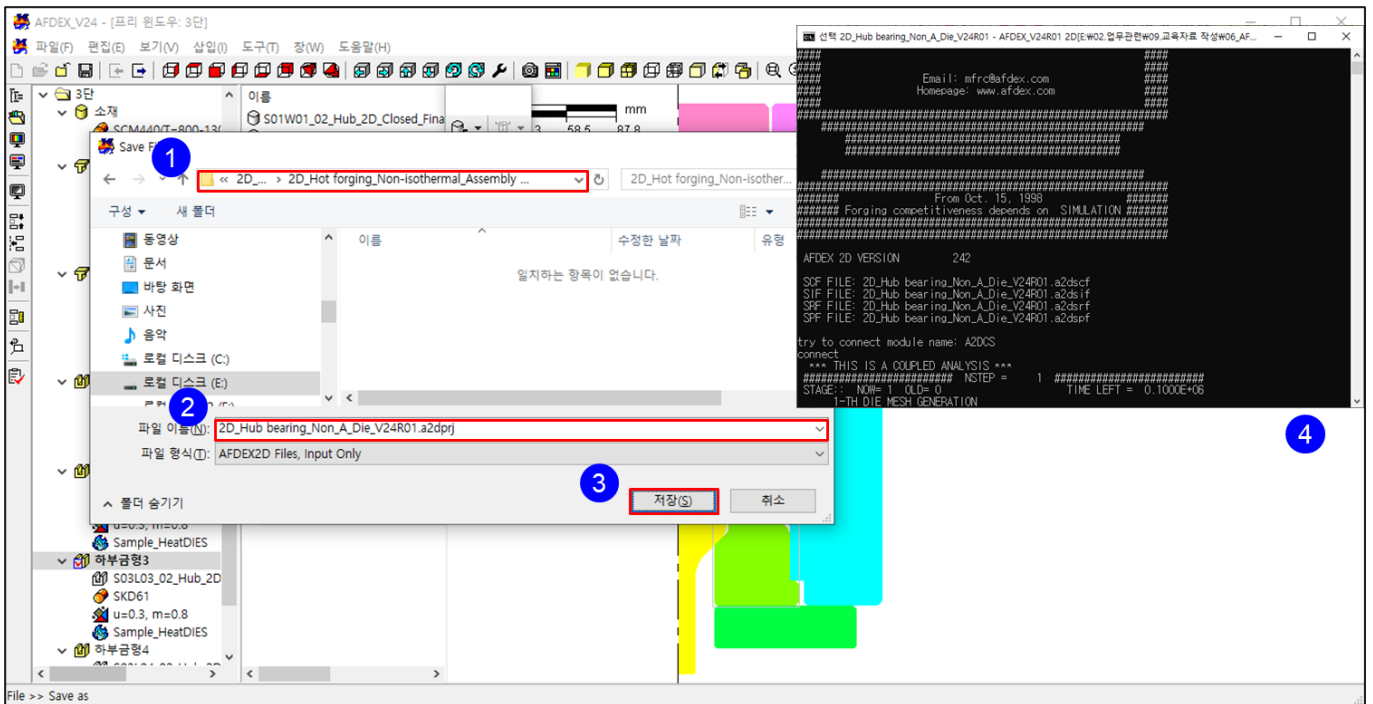
1. “I 4” “ -500”
2. “ ”

[]



1. “ On/Off” “ / ” .(“
2. “ / ” .) “ ” “ ”

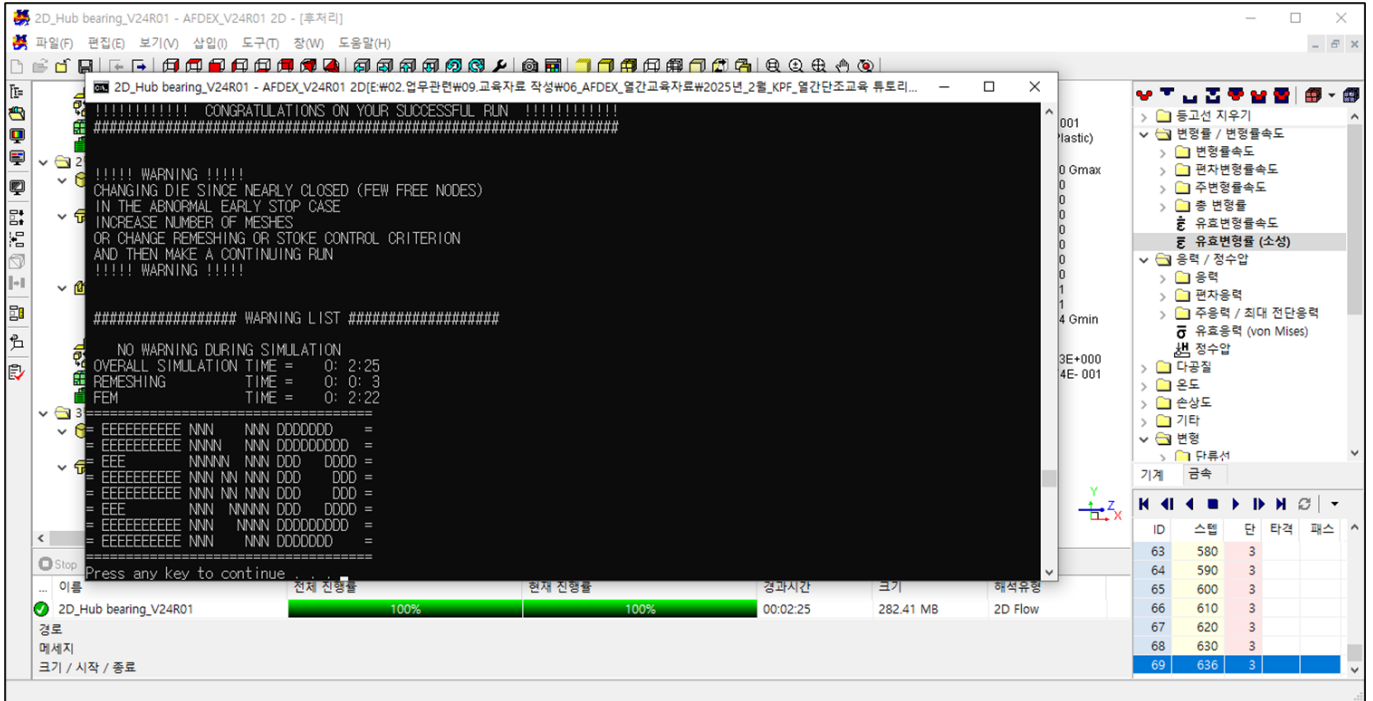
[]



1. ,
2. “ ” .()
3. “ ”

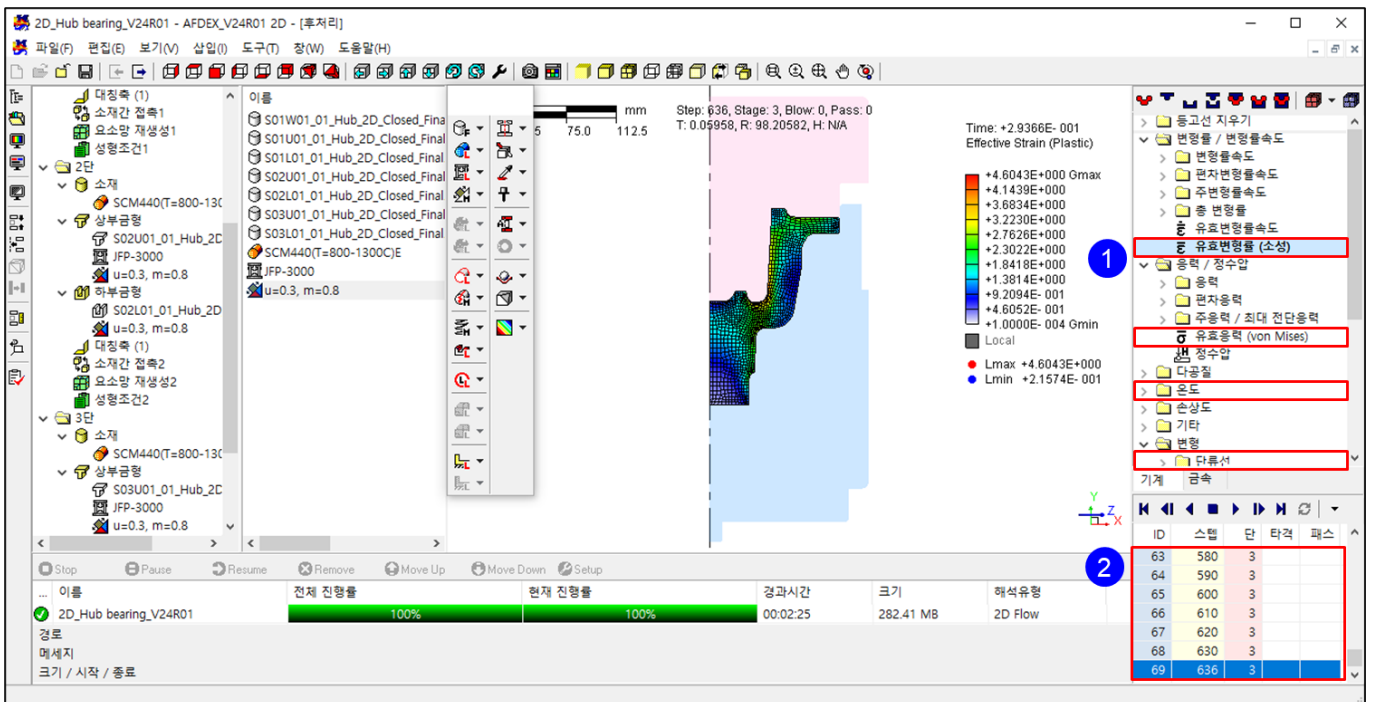
4.

[]



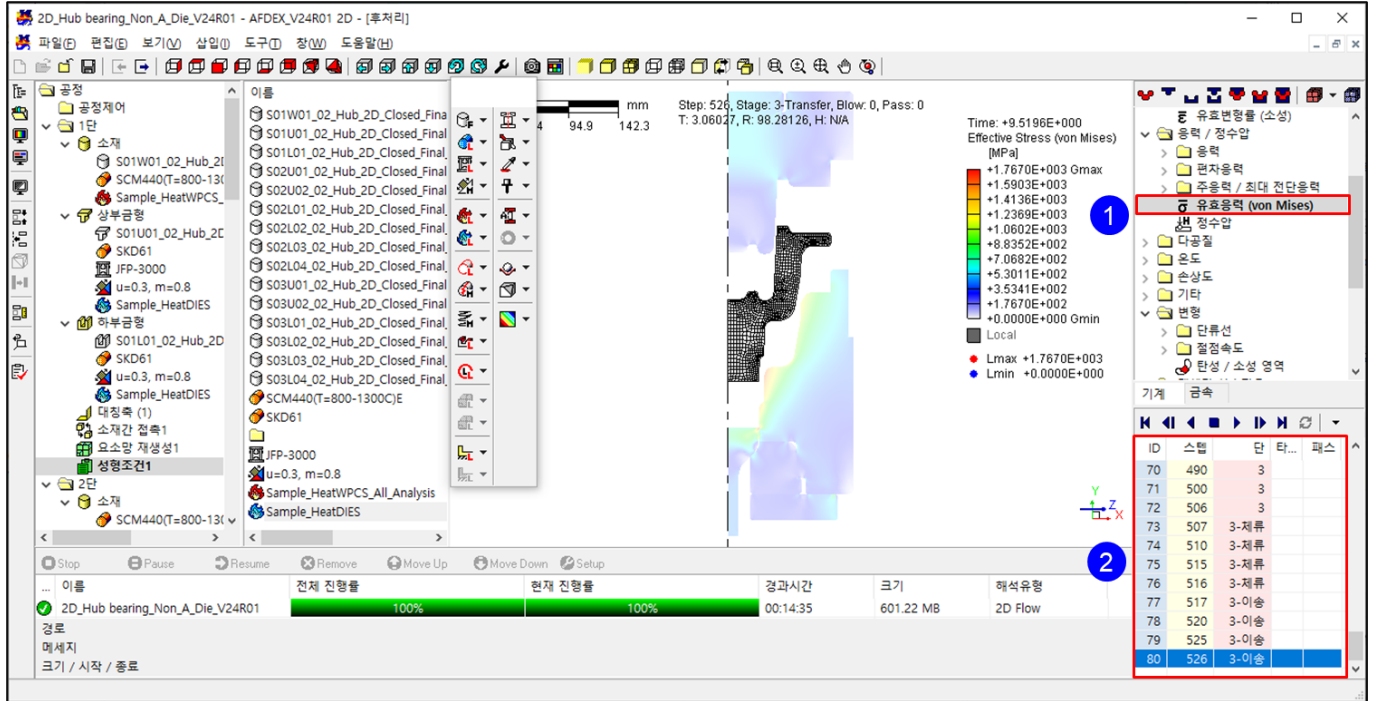
1. "END" 가

[: , (+), , (+), 가]



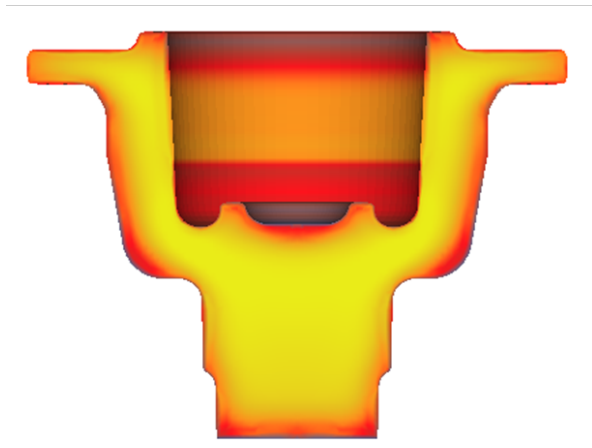
1. “ ” 가 .(
2.) 가

[: 가]

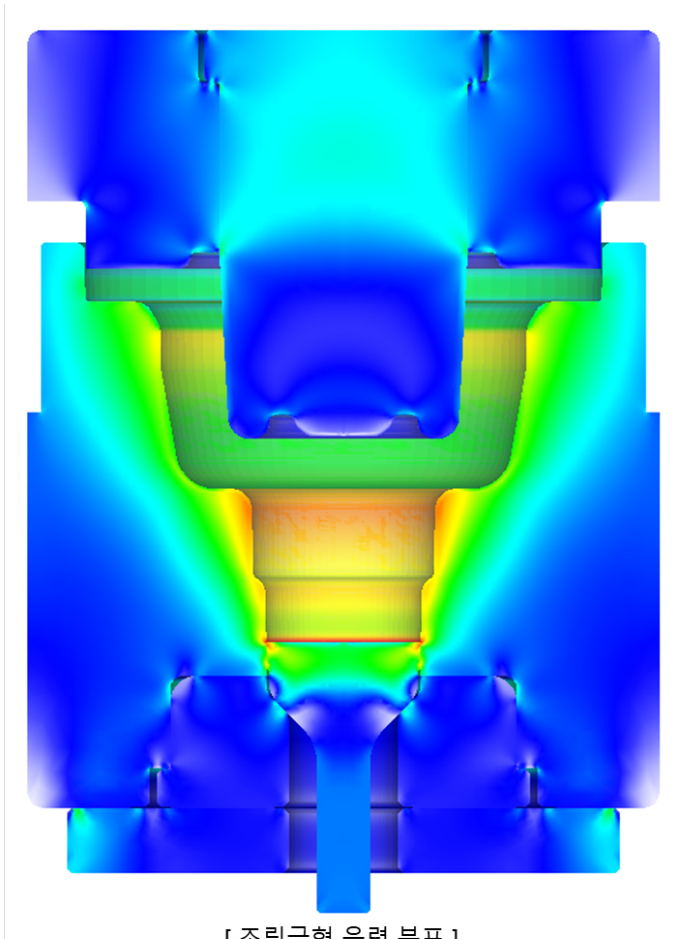


1. “ ” “ (von Mises)” .
2. 가

[]



[소재 온도]



[조립금형 응력 분포]

From:

<https://edu.afdex.com/> - AFDEX

Permanent link:

https://edu.afdex.com/doku.php?id=smjang:hot_2d_ex04

Last update: 2026/06/02 09:34

