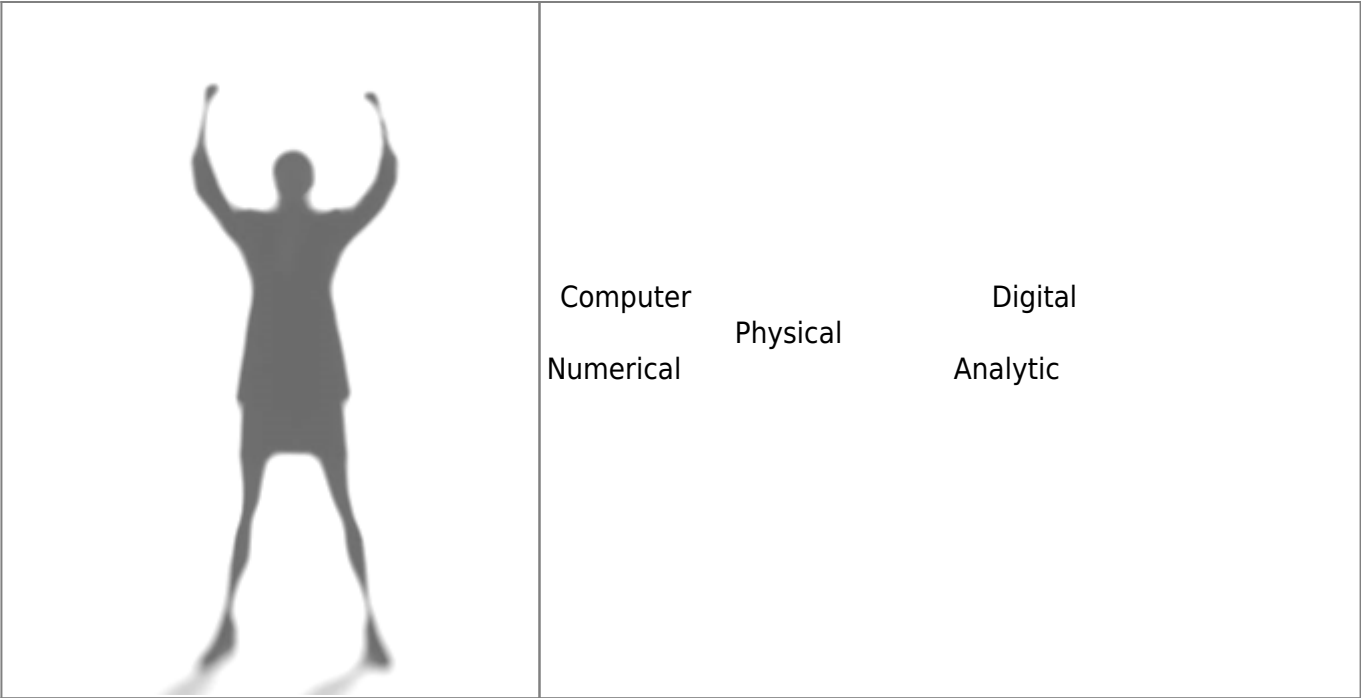


가	3
가	3
가	3
(Finite element)	4
(Mesh)	5
가	5
가	9
가	DATA	9
	10
	13
	13
	14

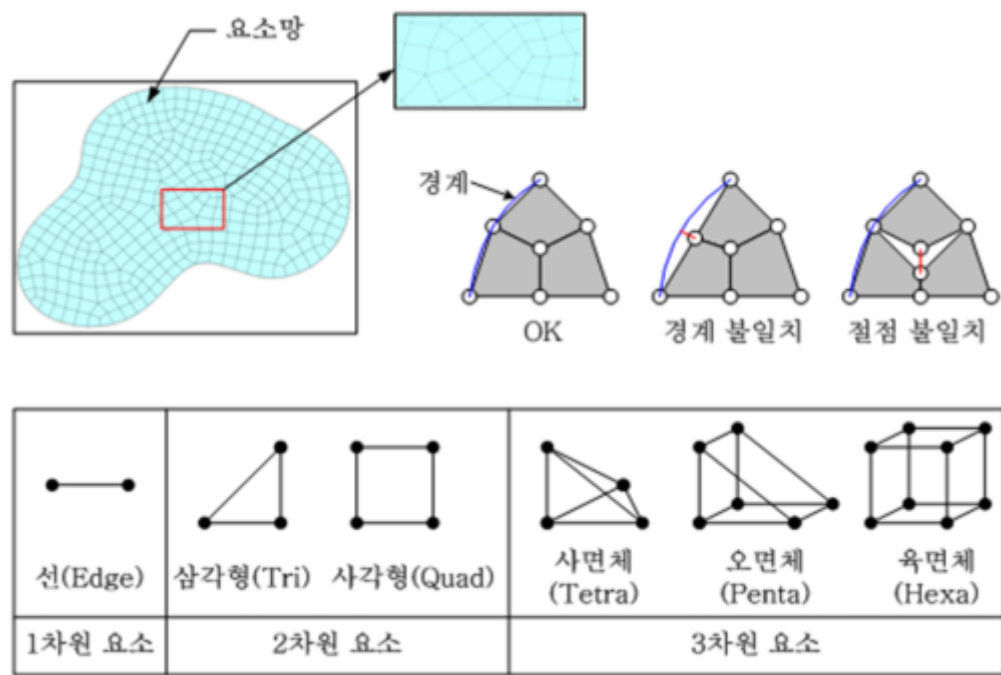


CAD

가 . , ,

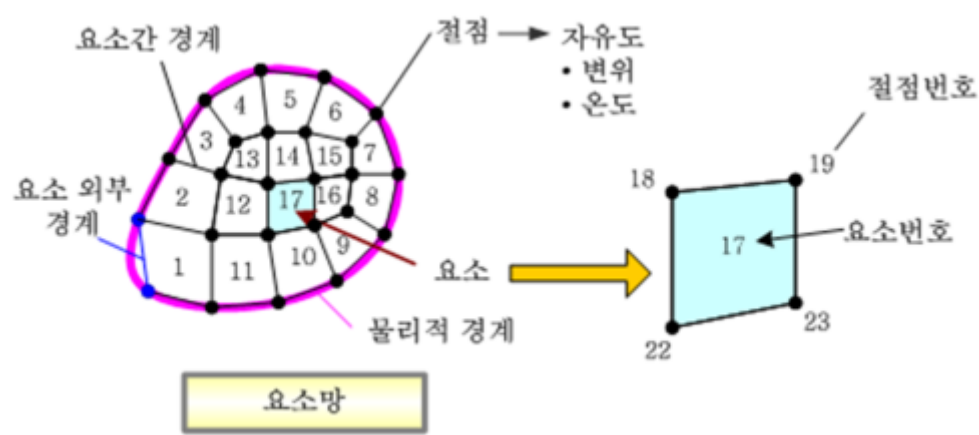
(Finite element)

- 가 (element) . (mesh)
- 1 . 2 (quadrilateral) (pentahedron) . 3 (hexahedron)가 (triangle) (tetrahedron),



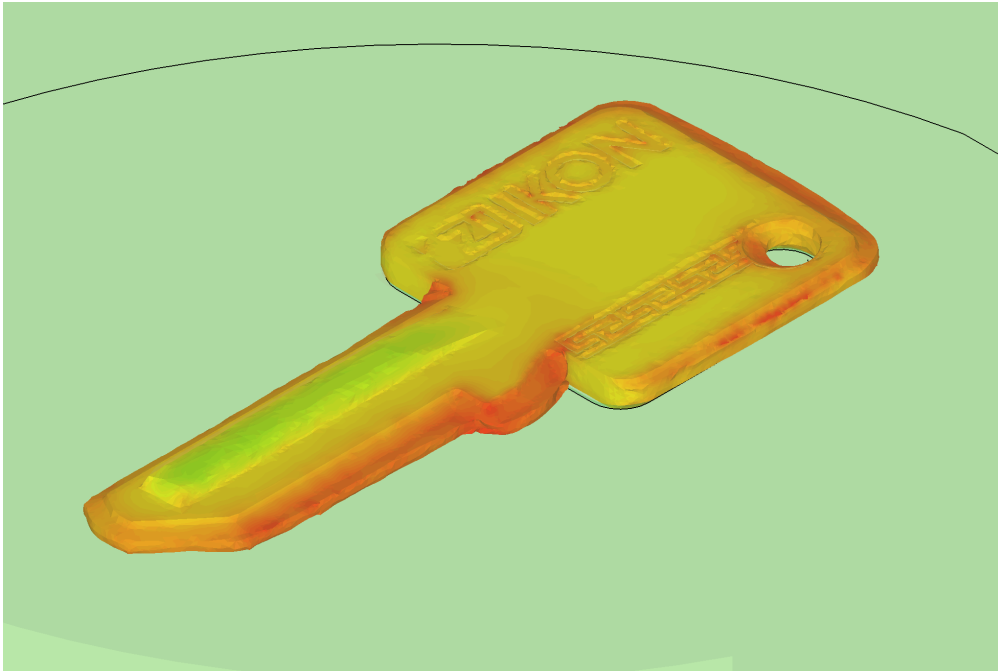
(Mesh)

- (finite element)
(element number), (node)
(network)
1 가
- 가 1



가

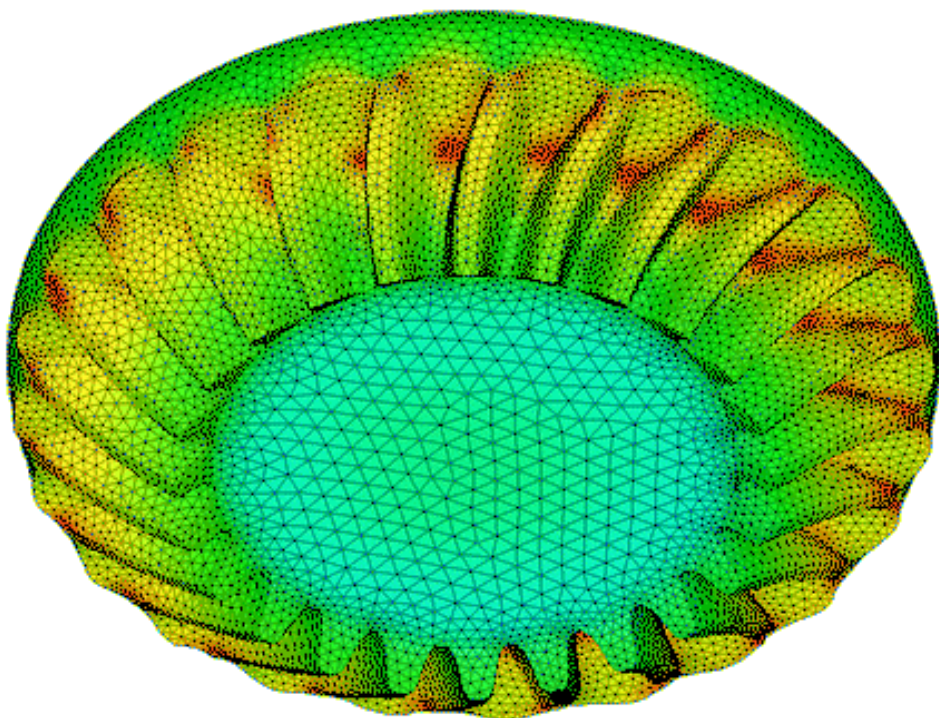
- Key



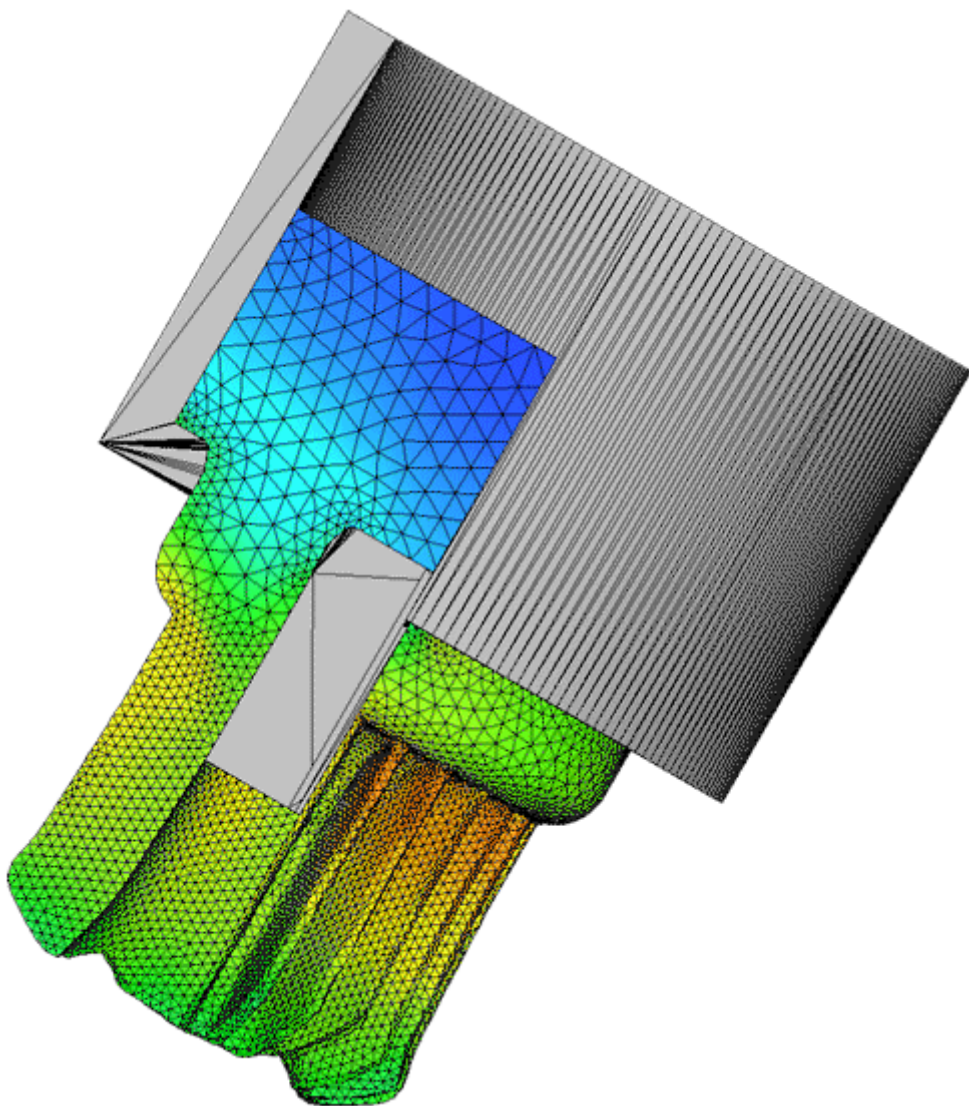
- Hub



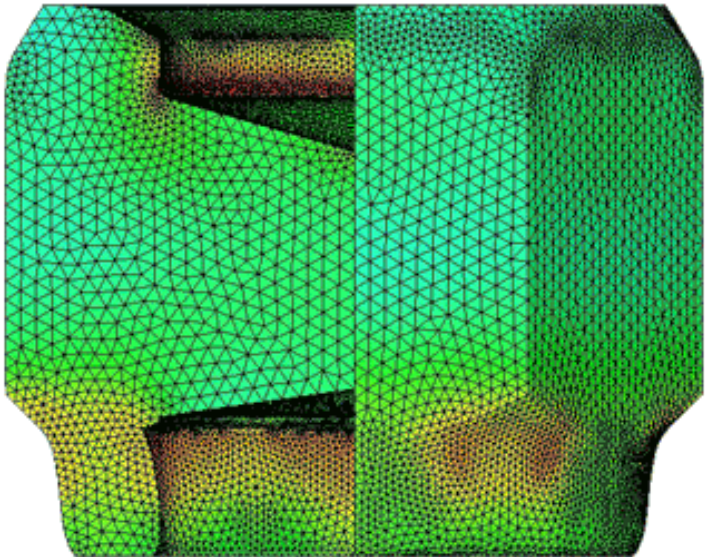
-



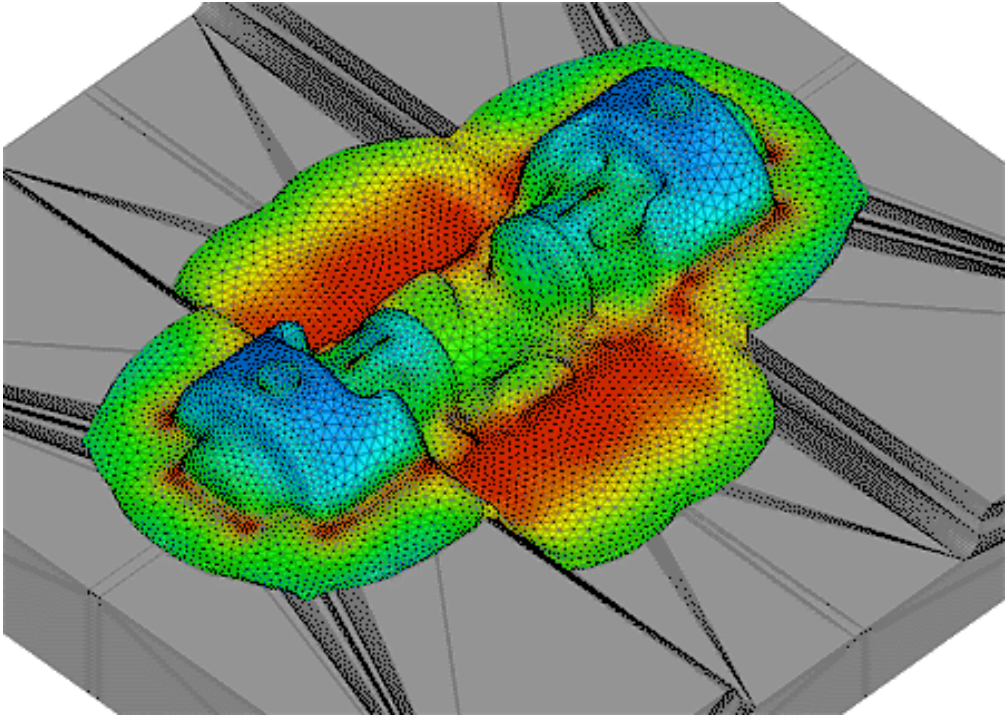
-



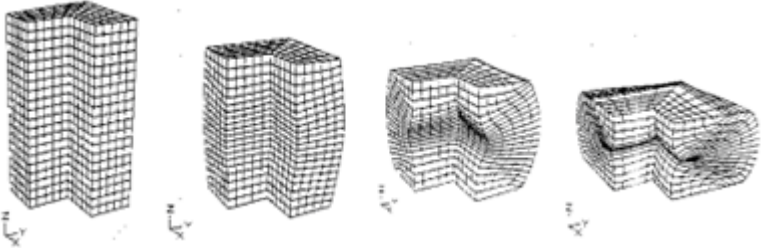
•



•



가

(Pre-Processing)	Geometry 3 (*.dxf, *.stl)
(Solving)	
(Post-Processing)	가 , , , ,

가

DATA

1.
 - 2 , 3 CAD *.dxf(2D), *.stl(3D) .
 - , .
2.
 - Library .
 - ,
3.
 - .

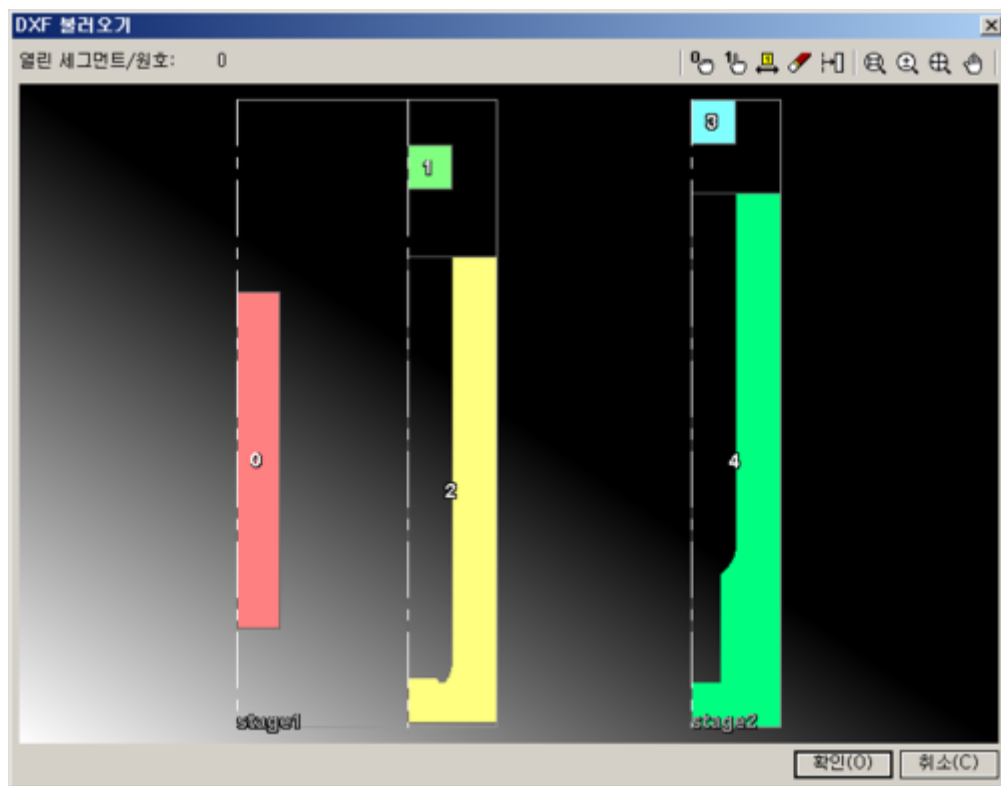
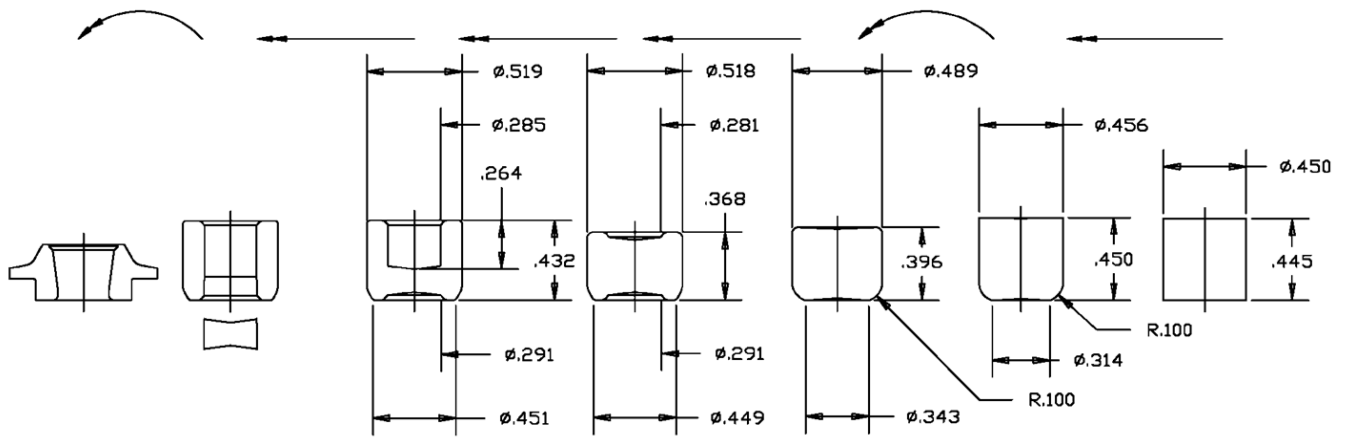
4.
-

(Axisymmetric model)

- 360 360 가 360
- 가 (homogeneity) , (boundary condition)
- 가 (axisymmetry)
- , 가 2 2 (numerical analysis) (axisymmetric analysis)



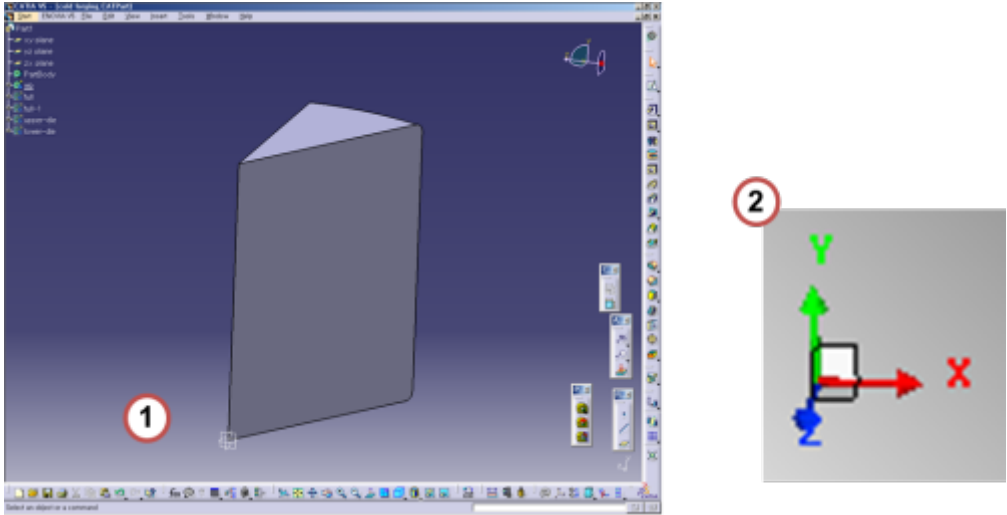
-



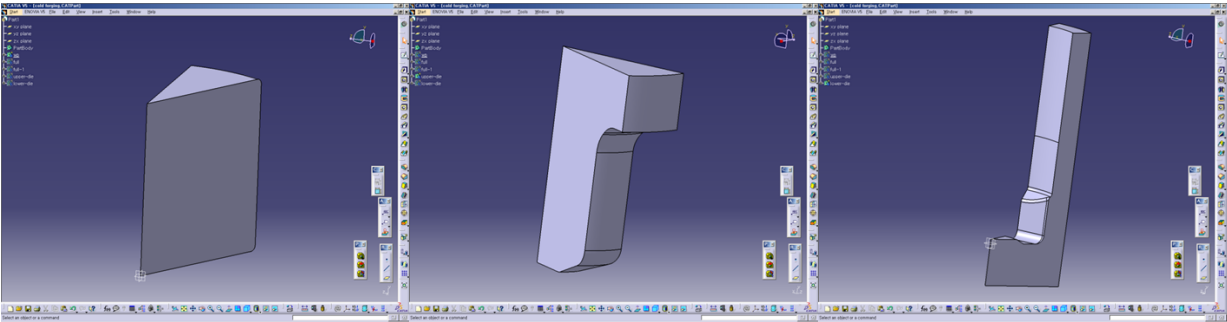
3

1. xyz . 3 CAD
(.)
, 가 3 CAD
가

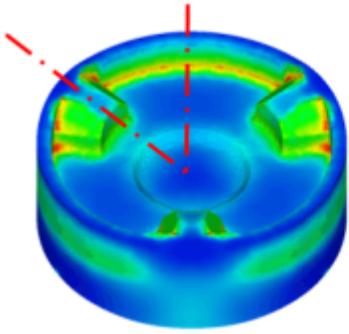
2. () y , y



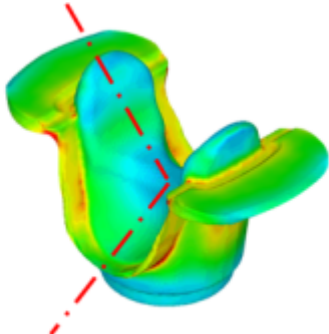
3. (, *.stl .)
ex) workpiece.stl, upperdie.stl, lowerdie.stl 3



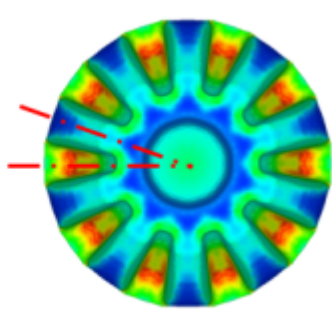
< > < > < >



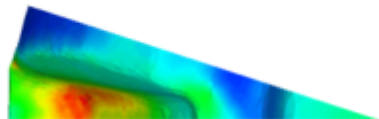
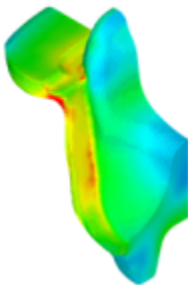
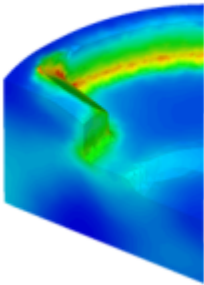
3D Model – 1/6 해석모델 사용



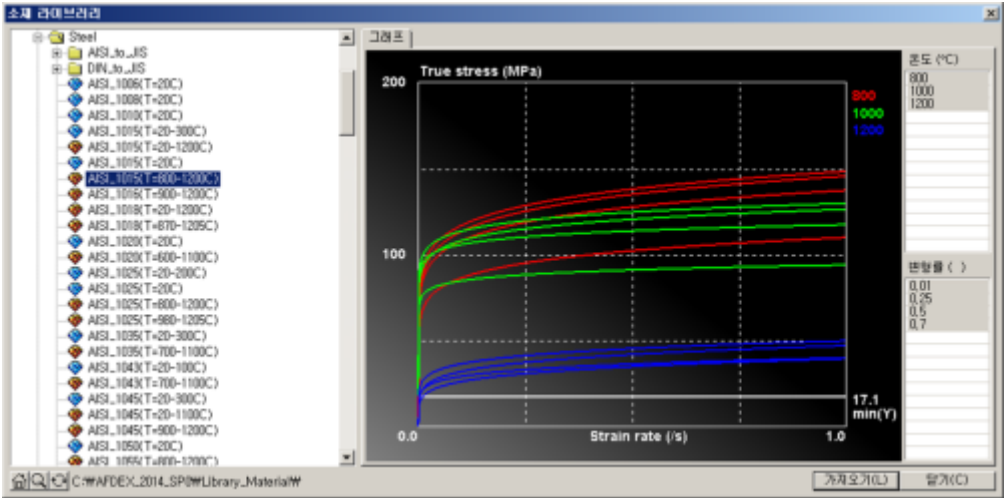
3D Model – 1/4 해석모델 사용



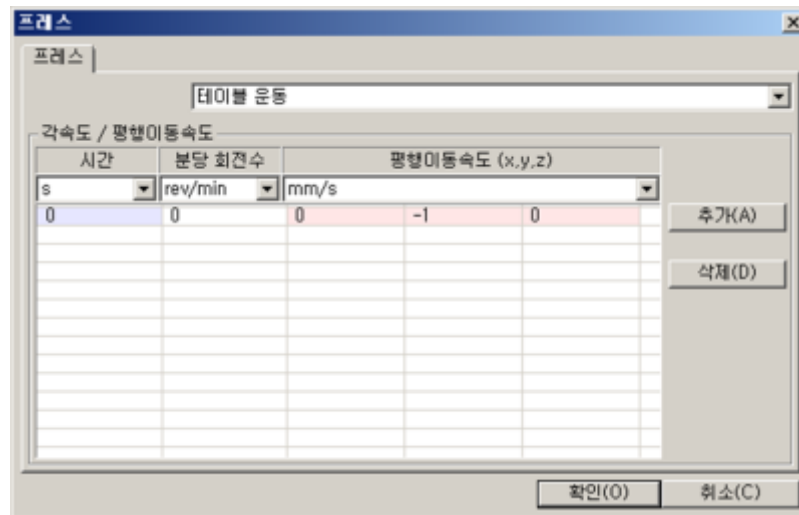
3D Model – 1/20 해석모델 사용



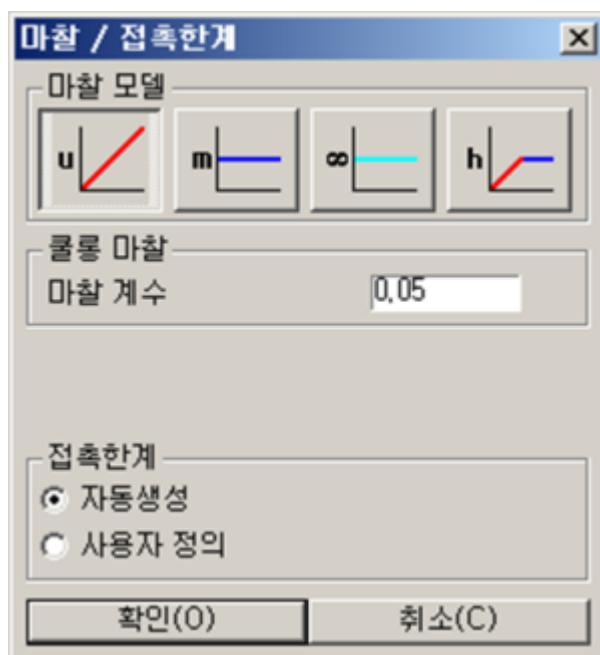
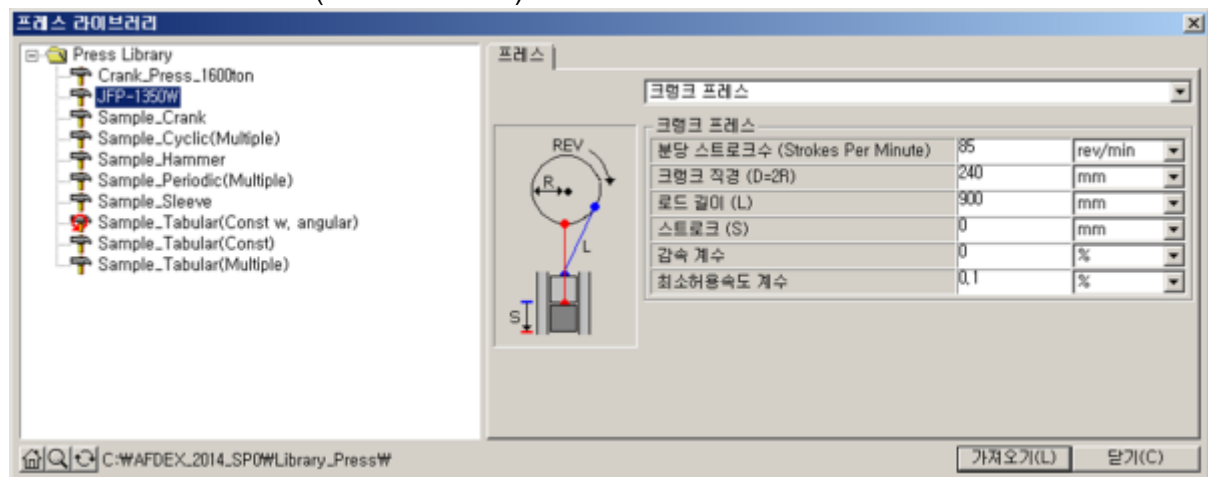
- DB

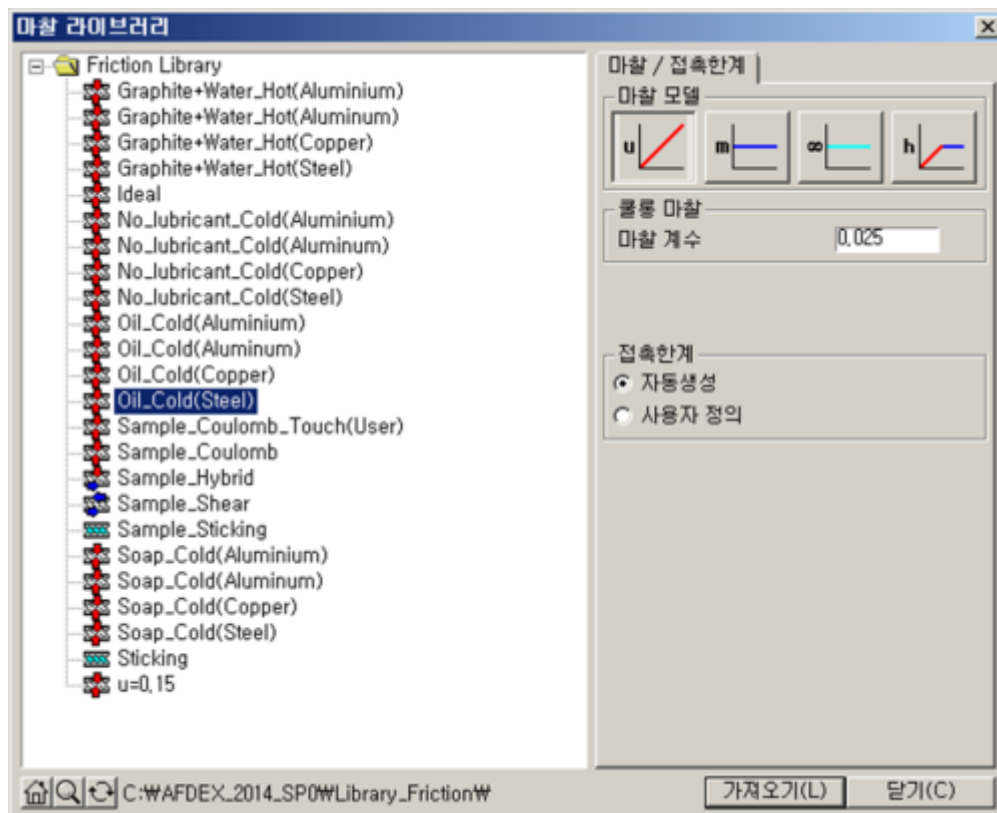


- :



• : ()





From:

<https://edu.afdex.com/> - **AFDEX**

Permanent link:

<https://edu.afdex.com/doku.php?id=basic:intro>

Last update: **2025/03/05 06:46**

